

**TU56
DECtape transport
engineering drawings**

MASTER DRAWING LIST

NO.	TITLE	UNIT VARIATIONS												
		TU56	TU56C	TU56-H	TU56-HO	TU56-M	TU56-MO	TU56-MI	TU56-MH	TU56-MJ	TU56-MK	TU56-ML	TU56-MR	
DEC-00-HRTB-D	TU56	X	X	X	X	X	X	X	X	X	X	X	X	

USED ON OPTIONS

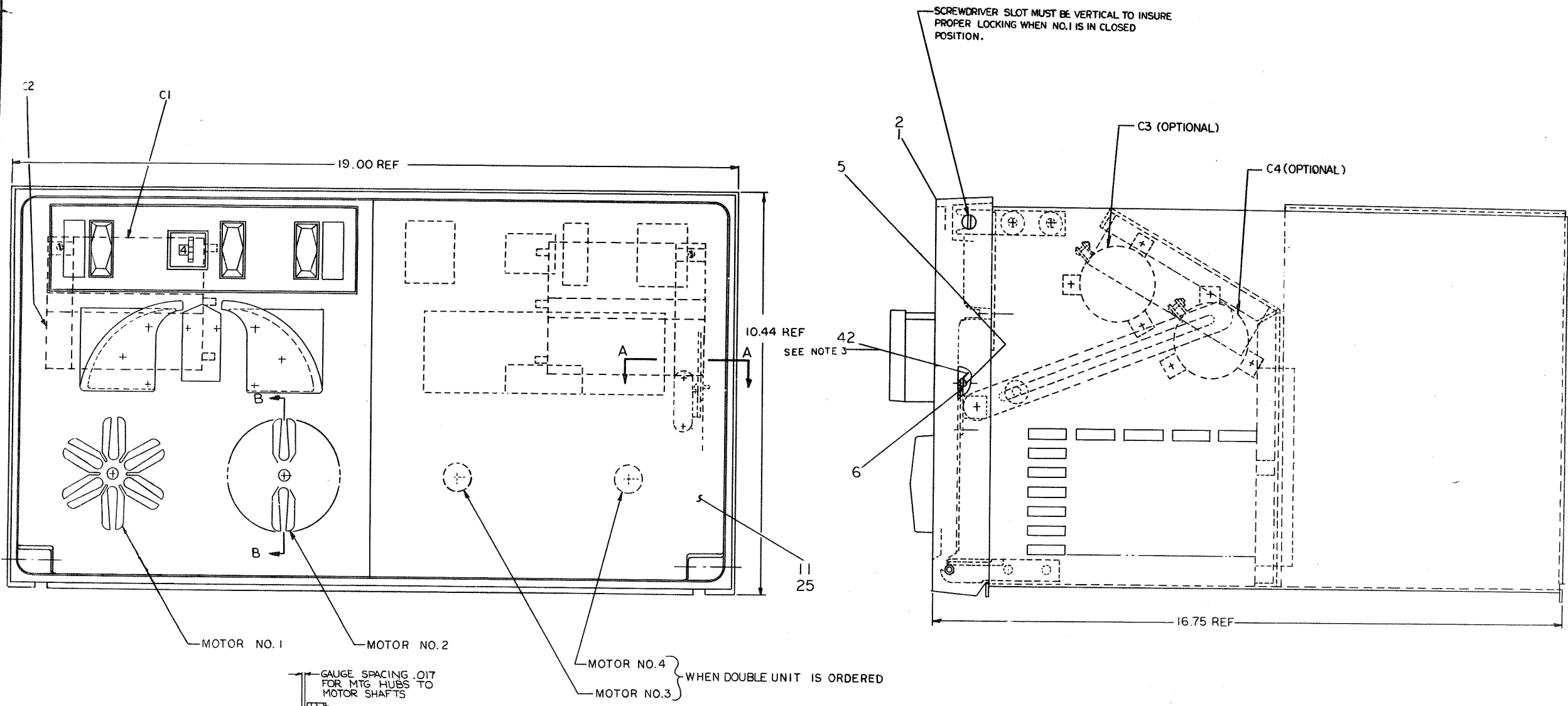
REVISIONS	CHG. NO.	DATE	APP'D.	DESCRIPTION	DRN.	DATE	TITLE	REV.
AV	A	3/72		TU56-67	K. GULICK	7/69	digital EQUIPMENT CORPORATION MAYNARD, MASSACHUSETTS	TU56 DECTAPE
AS	S	3/74		TU56-80	D. HEALY	8/69		
AD	D	3/74		TU56-79	VAILLANT	8/69		
AO	O	6/73		TU56-78	PROJ. ENG 	8/69		
AZ	Z	4/73		TU56-77		8/69		
AM	M	3/73		TU56-76	PROD.	8/69		
AL	L	7/72		TU56-72	FIRST USED ON			
AP	P	5/72		TU56-68	TU56			
AX	X	8/72		TU56-71	SCALE	NONE		
AT	T	6/72		TU56-72	SHEET	1 OF 2		
AK	K	5/72		TU56-70				
AP	P	5/72		TU56-68				
AT	T	3/72		TU56-67				

PRINT SET	DWG. NO.	REV. NO. OF LET.	SHEETS	TITLE	OPTION NO.
X	E-UA-TU56-0-0	E	2	TU56 ASSEMBLY	
X	A-PL-TU56-0-0	A	3	TU56 ASSEMBLY (PARTS LIST)	
X	D-DI-TU56-0-1	D	1	DRAWING INDEX LIST TU56	
X	K-WL-TU56-0-2	K	1	TU56 DEC TAPE	
X	D-MU-TU56-0-MU	D	1	MODULE UTILIZATION TU56	
X	A-PL-TU56-0-MU	A	1	MODULE UTILIZATION TU56 (PARTS LIST)	
X	D-BS-TU56-0-TLD	D	2	TRANSPORT LOGIC DIAGRAM	
X	D-AD-7006321-0-0	A	1	WIRED ASSY TU56	
X	A-PL-7006321-0	A	1	WIRED ASSY TU56 (PARTS LIST)	
X	A-AL-TU56-0-5	A	2	ACCESSORY LIST	
X	A-SP-TU56-0-3	A	5	TU56 SKEW CHECK & HEAD SHIMMING PROC.	
X	A-SP-TU56-0-4	A	6	TU56 CHECKOUT PROCEDURE	
X	A-SP-TU56-0-6	A	3	ACCEPTANCE PROCEDURE	
X	B-CS-G859-0-1	B	1	CLOCK REGULATOR	
X	B-CS-G851-0-1	B	1	RELAY	
X	B-CS-G888-0-1	B	1	MANCHESTER READER/WRITER	
X	B-CS-M302-0-1	B	1	ONE SHOT DELAY	
X	B-CS-G847-0-1	B	1	DUAL MOTOR VOLTAGE CONTROL	
X	B-CS-G848-0-1	B	1	MOTOR DRIVER	
X	D-AD-5408500-0-0	D	1	SWITCH CONTROL PANEL (TU56)	
X	A-PL-5408500-0-0	A	1	SWITCH CONTROL PANEL (PARTS LIST)	
X	E-AD-7006320-0-0	E	2	PANEL FRONT ASSY	
X	A-PL-7006320-0-0	A	2	PANEL FRONT ASSY (PARTS LIST)	

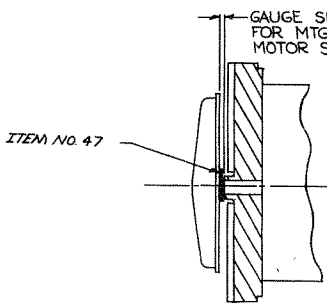
TITLE TU56 DECTAPE
SHEET 2 OF 2
SIZE CODE A ML
NUMBER TU56-0

LEGEND	
NUMBER	VARIATION
TU56-H	AS SHOWN (1/2 UNIT)
TU56	DOUBLE UNIT
TU56-C	DOUBLE UNIT
TU56-HC	AS SHOWN (1/2 UNIT)
TU56-M	DOUBLE UNIT
TU56-MC	DOUBLE UNIT
TU56-MD	AS SHOWN (1/2 UNIT)
TU56-MH	AS SHOWN (1/2 UNIT)
TU56-MJ	AS SHOWN (1/2 UNIT)
TU56-MR	DOUBLE UNIT

NOTES:
 1. FOR DRAWING INDEX LIST REFER TO DRAWING D-DI-TU56-0-1
 2. ITEMS 36 & 37 ARE TO BE USED FOR MTG OF UNIT ASSY IN H950 CABINET. ITEM 35 TO BE USED FOR MTG IN TUBULAR STYLE CAB.
 3. GROUND WIRE WILL BE DRESSED WITH WIRES TO MOTOR #4 AND RUN FROM LUG ON LOGIC MTG BAR TO ITEM 42.

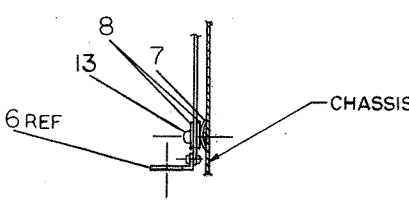


GAUGE SPACING .017 FOR MTG HUBS TO MOTOR SHAFTS



SECTION B-B

WHEN DOUBLE UNIT IS ORDERED

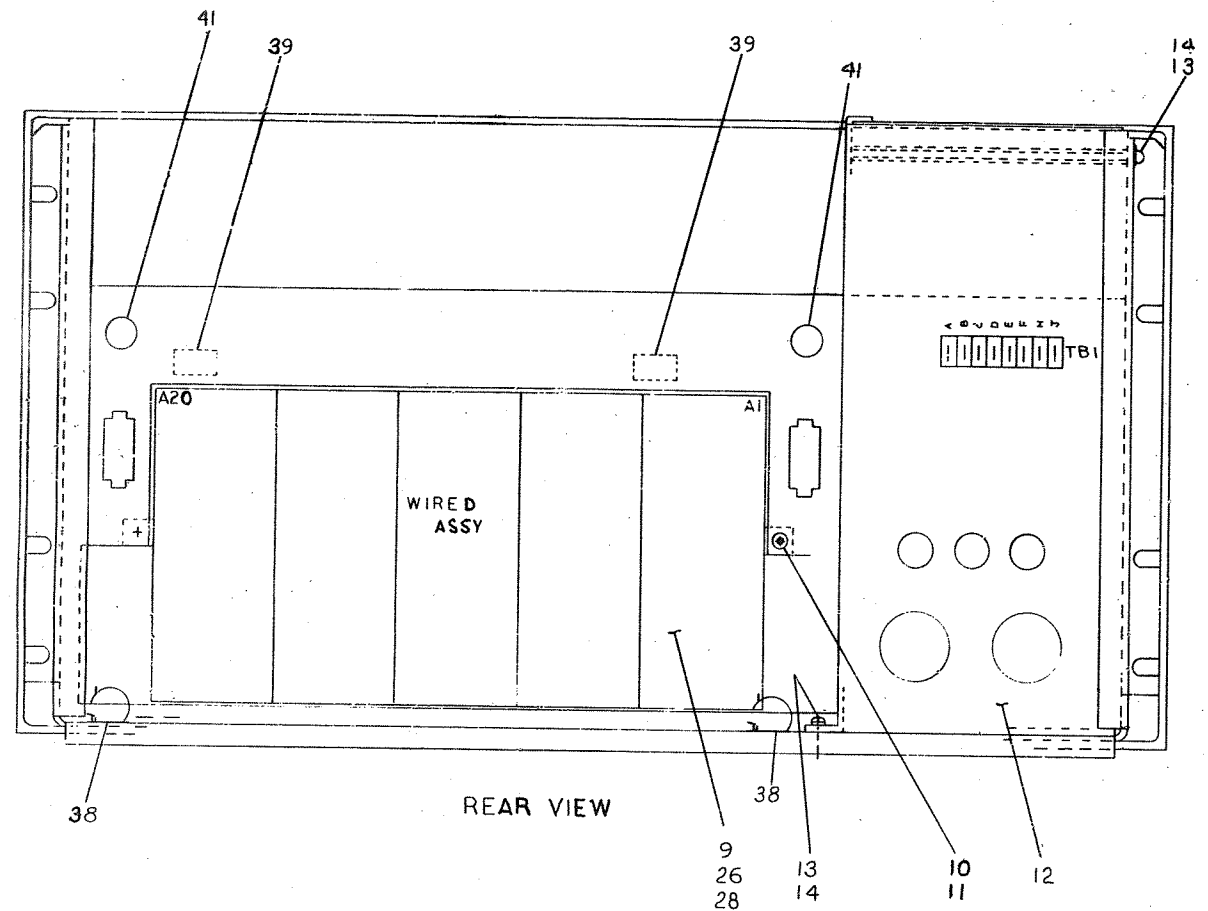


SECTION A-A
2 PLACES

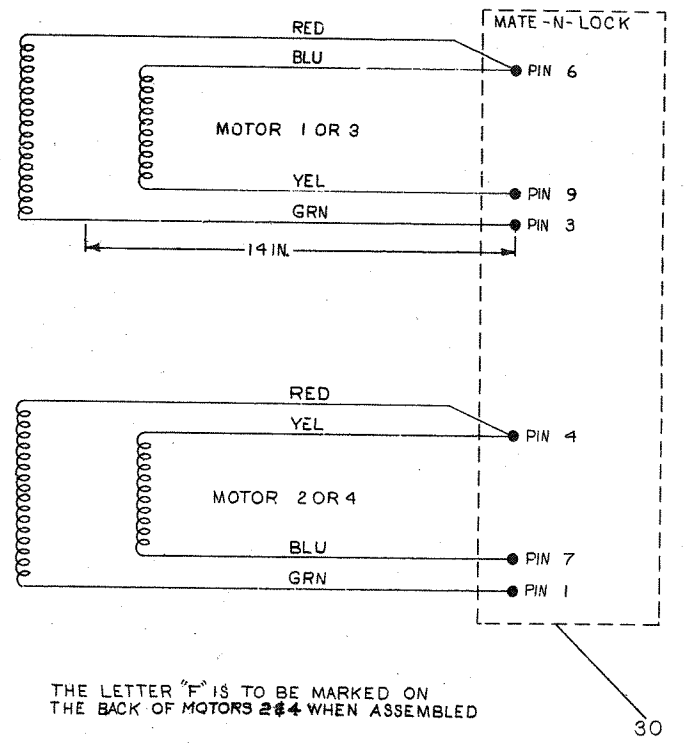
REV.	DESCRIPTION	DATE	BY	CHKD.
1	REVISED TO SHOW CHANGES TO MOTOR NO. 1	10-18-74	J. M. MARTELLO	J. M. MARTELLO
2	REVISED TO SHOW CHANGES TO MOTOR NO. 2	10-18-74	J. M. MARTELLO	J. M. MARTELLO
3	REVISED TO SHOW CHANGES TO MOTOR NO. 3	10-18-74	J. M. MARTELLO	J. M. MARTELLO
4	REVISED TO SHOW CHANGES TO MOTOR NO. 4	10-18-74	J. M. MARTELLO	J. M. MARTELLO
5	REVISED TO SHOW CHANGES TO MOTOR NO. 1	10-18-74	J. M. MARTELLO	J. M. MARTELLO
6	REVISED TO SHOW CHANGES TO MOTOR NO. 2	10-18-74	J. M. MARTELLO	J. M. MARTELLO
7	REVISED TO SHOW CHANGES TO MOTOR NO. 3	10-18-74	J. M. MARTELLO	J. M. MARTELLO
8	REVISED TO SHOW CHANGES TO MOTOR NO. 4	10-18-74	J. M. MARTELLO	J. M. MARTELLO
9	REVISED TO SHOW CHANGES TO MOTOR NO. 1	10-18-74	J. M. MARTELLO	J. M. MARTELLO
10	REVISED TO SHOW CHANGES TO MOTOR NO. 2	10-18-74	J. M. MARTELLO	J. M. MARTELLO
11	REVISED TO SHOW CHANGES TO MOTOR NO. 3	10-18-74	J. M. MARTELLO	J. M. MARTELLO
12	REVISED TO SHOW CHANGES TO MOTOR NO. 4	10-18-74	J. M. MARTELLO	J. M. MARTELLO
13	REVISED TO SHOW CHANGES TO MOTOR NO. 1	10-18-74	J. M. MARTELLO	J. M. MARTELLO
14	REVISED TO SHOW CHANGES TO MOTOR NO. 2	10-18-74	J. M. MARTELLO	J. M. MARTELLO
15	REVISED TO SHOW CHANGES TO MOTOR NO. 3	10-18-74	J. M. MARTELLO	J. M. MARTELLO
16	REVISED TO SHOW CHANGES TO MOTOR NO. 4	10-18-74	J. M. MARTELLO	J. M. MARTELLO
17	REVISED TO SHOW CHANGES TO MOTOR NO. 1	10-18-74	J. M. MARTELLO	J. M. MARTELLO
18	REVISED TO SHOW CHANGES TO MOTOR NO. 2	10-18-74	J. M. MARTELLO	J. M. MARTELLO
19	REVISED TO SHOW CHANGES TO MOTOR NO. 3	10-18-74	J. M. MARTELLO	J. M. MARTELLO
20	REVISED TO SHOW CHANGES TO MOTOR NO. 4	10-18-74	J. M. MARTELLO	J. M. MARTELLO

TOLERANCES DECIMALS	UNLESS OTHERWISE SPECIFIED	QTY.	DESCRIPTION	PART NO.	ITEM NO.
XX = ± .005			TU56-H		
XX = ± .02					
XX = ± .1					
MATERIAL		A-ML-TU56-H			
FINISH		SCALE 1/1			
TITLE		TU56 ASSEMBLY			
DRAWN		E. MARTELLO			
CHECKED		E. MARTELLO			
DATE		10-18-74			

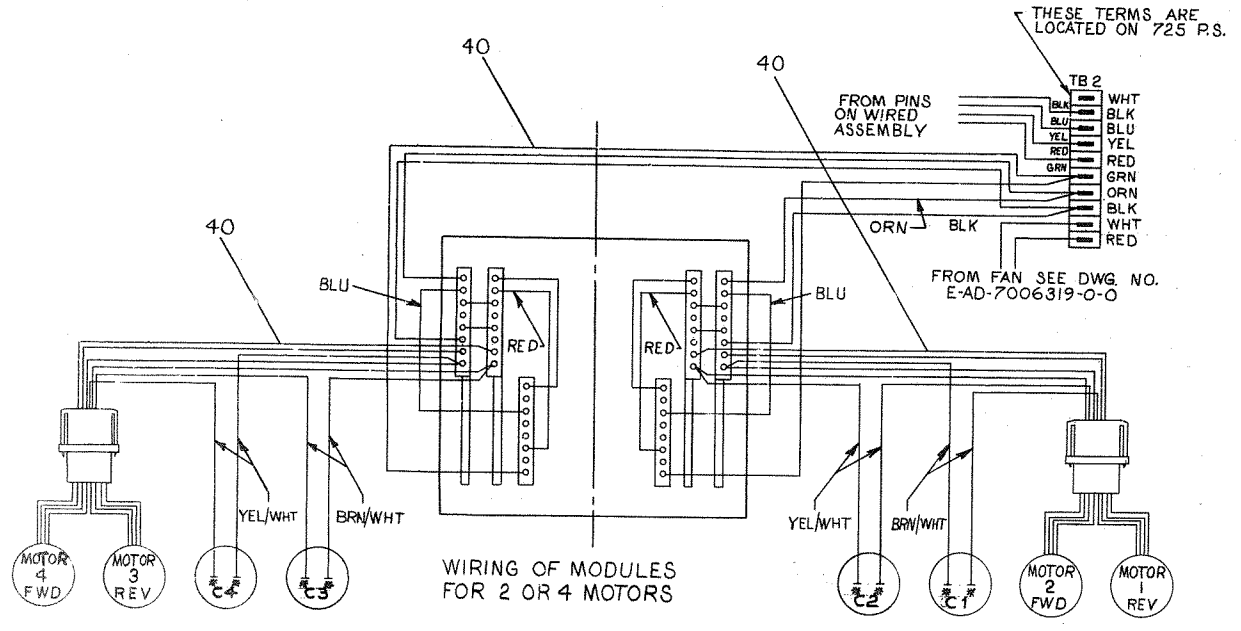
1. MOTORS SUPPLIED WITH WIRES PART NO. 33 TO BE CRIMPED ON WIRE AND INSERTED INTO PART NO. 30 AT ASSEMBLY.
 2. *ASTERISK INDICATES WIRES TO BE SOLDERED IN PLACE AT POINT INDICATED
 3. ITEM NO. 2 JO. SHOWN USE WHERE REQ'D.
~~4. SCREWS - HOLD ITEM 13, SHIPPING BRACKET WHEN BRACKET IS REMOVED AFTER SHIPMENT, REPLACE SCREWS.~~
 4. PACKAGING INSTRUCTION 3700022 FOR CUSTOMER SHIPMENTS AND 3700063 FOR INTERPLANT SHIPMENTS.



MOTOR WIRING DIAGRAM



THE LETTER "F" IS TO BE MARKED ON THE BACK OF MOTORS 2 & 4 WHEN ASSEMBLED



THESE TERMS ARE LOCATED ON 725 P.S.

QTY.	DESCRIPTION	PART NO.	ITEM NO.
	PARTS LIST		
	DRAWN BY GULICK	DATE 12-7-69	digital EQUIPMENT CORPORATION MILFORD, MASSACHUSETTS
	CHECKED BY HEALY	DATE 12/15/69	
	DESIGNED BY VAILLANT	DATE 8/26/69	
	PROJ. ENGR. LUITIG	DATE 8/26/69	
	PROD. ENGR. TOMPKINS	DATE 8-26-69	
MATERIAL		FIRST USED ON	
DRAWN		SCALE NONE	
SHEET 2 of 2		TITLE TU56 ASSEMBLY	
		NUMBER EJA TU56-0-0	
		DWT.	

DIGITAL EQUIPMENT CORPORATION
MAYNARD, MASSACHUSETTS
PARTS LIST

MADE BY KEN GULICK
DATE 8/6/69
ENG C. VALLIANT
DATE 8/26/69

CHECKED D. HEALEY
DATE 8/18/69
PROD C. TOMPKINS
DATE 8/26/69

SECTION 1
ISSUED SECT. 1

ITEM NO.	DWG NO. / PART NO.	DESCRIPTION
1	E-AD-7006320-1-0	PANEL FRONT ASSEMBLY
2	E-AD-7006320-2-0	PANEL FRONT ASSEMBLY
3	E-AD-7006319-1-0	CHASSIS ASSEMBLY
4	E-AD-7006319-2-0	CHASSIS ASSEMBLY
5	9006070-1	SCR PAN 10-32 x 3/8 LG SST
6	1209600	LID SUPPORT #43067 CHANDLER & FARQUHAR
7	9008135	WASH CURVED #U250-0075 ASSOC SPR
8	9008146	WASH FLAT .630.D.X.23I.D.X.048 THK SST
9	D-AD-7006321-0-0	WIRED ASSY TU56
10	9006075-1	SCR PHL HD PAN #10-32 X 3/4 IG SST
11	9006565	NUT KEPS #10-32
12	D-UA-725-0-0	POWER SUPPLY 725 +
13	9006021-1	SCR PHL HD PAN 6-32 X 5/16 LG SST
14	9007651	WASH EXT TOOTH #6 HOLES
15	9007917	CONN SOLDERLESS #50902 ARKLESS
16	9007193	CONN SOLDERLESS #3000541B
17	9107360-55	WIRE #18 AWG STRD TEFLON INS (GRN)
18	9107360-33	WIRE #18 AWG STRD TEFLON INS (ORN)
19	9107360-48	WIRE #18 AWG STRD TEFLON INS (RED)
20	9107360-00	WIRE #18 AWG STRD TEFLON INS (BLK)
21	9107360-66	WIRE #18 AWG STRD TEFLON INS (BLD)
22	9107360-22	WIRE #18 AWG STRD TEFLON INS (RED)

TITLE TU56 ASSEMBLY
ASSY NO. E-UA-TU56-0-0
SIZE CODE A PL
SHEET 1 OF 3
DISTRIBUTION TU56-0-0

		QUANTITY / VARIATION								
		TU56-H	TU56-M	TU56-MR	TU56-HC	TU56-C	TU56-MD	TU56-MC	TU56-MH	TU56-MJ
1		1	-	-	1	1	1	1	1	1
-		-	1	1	1	1	1	1	1	1
1		1	-	-	1	1	1	1	1	1
-		-	1	1	1	1	1	1	1	1
4		4	4	4	4	4	4	4	4	4
2		2	2	2	2	2	2	2	2	2
2		2	2	2	2	2	2	2	2	2
4		4	4	4	4	4	4	4	4	4
1		1	1	1	1	1	1	1	1	1
2		2	2	2	2	2	2	2	2	2
6		6	2	2	6	2	6	2	6	6
1		1	1	1	1	1	1	1	1	1
5		5	5	5	5	5	5	5	5	5
3		3	3	3	3	3	3	3	3	3
32		32	64	64	32	64	32	64	32	32
3		3	6	6	3	6	3	6	3	3

DIGITAL EQUIPMENT CORPORATION
MAYNARD, MASSACHUSETTS
PARTS LIST

MADE BY KEN GULICK
DATE 8/6/71
ENG C. VALLIANT
DATE 8/26/69

CHECKED D. HEALEY
DATE 8/19/71
PROD E.R. TOMPKINS
DATE 8/26/69

SECTION 1
ISSUED SECT. 1

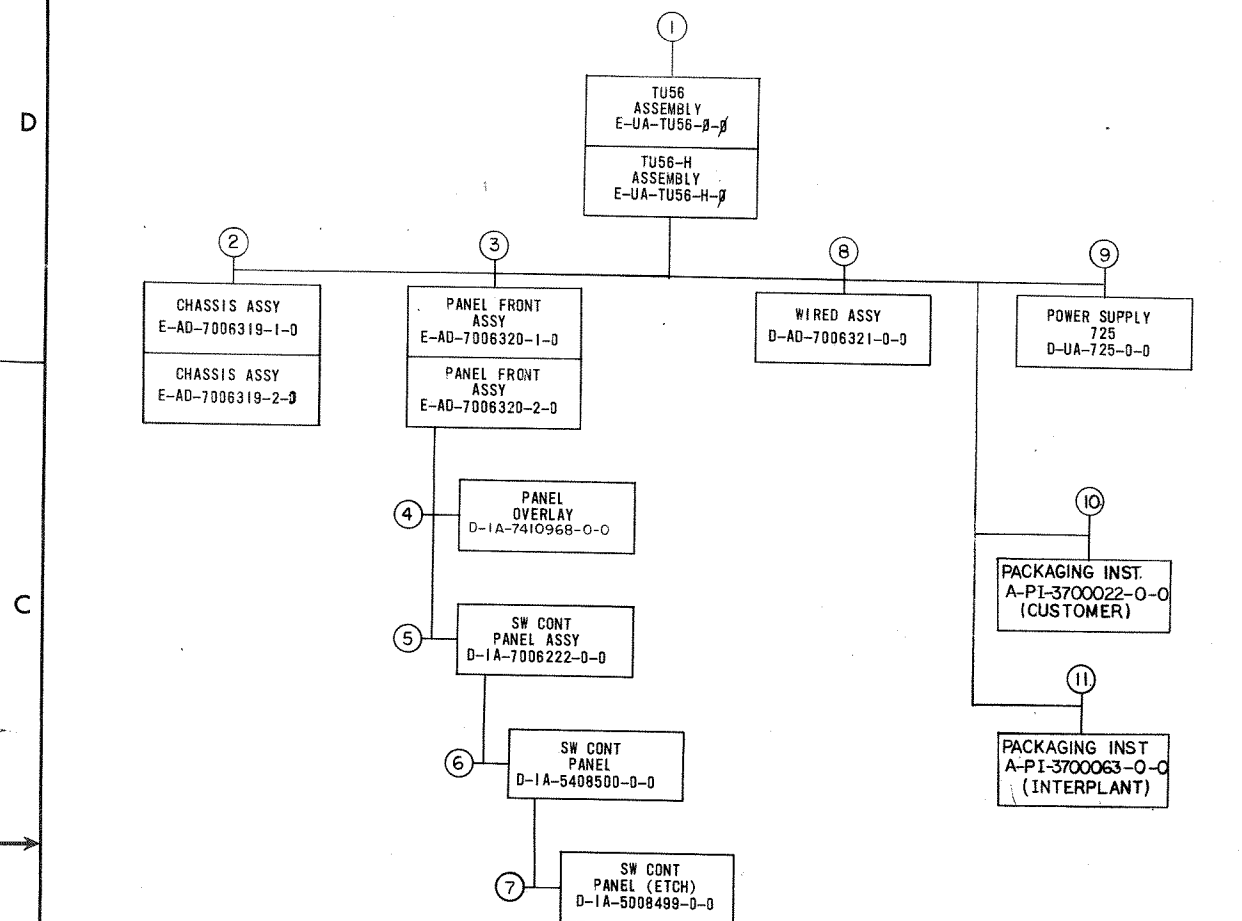
ITEM NO.	DWG NO. / PART NO.	DESCRIPTION
23	9007430-56	WIRE #18 AWG STRD TEFLON INS (GRN)
24	9007091	WIRE #18 AWG STRD TEFLON INS (ORN)
25	D-IA-7407534-0-0	COVER PLATE - HALF
26	C-IA-7405152-1-0	INFO CABLE
27	D-IA-7006223-0-0	INTERCONNECTION CABLE
28	D-UA-BC02X-3-0	CABLE RIBBON M908-M908
29	7006697	TU56 MOTOR CONNECTOR CABLE
30	1209351-09	MATE-N-LOCK SOCKET HOUSING (9 PIN)
31	7006695	TU56 CARD CONNECTOR CABLE (R)
*	D-IA-7006412-0-0	OPTION CABLE TU56
32	7006696	TU56 CARD CONNECTOR CABLE (L)
33	1209378	PIN, CONNECTOR
34	** C-IA-7408007-0-0	BRACKET, RT, ANGLE SUPPORT
35	** E-IA-7408009-0-0	SPACER, MTG BRACKET
36	** C-MD-7408322-0-0	SPACER BLOCK
37	** C-MD-7408321-0-0	MOUNTING BRACKET
38	9008340-0	DEKCLAS PVC HARNESS CLASP (DK 1/2-375F)
39	9008341-0	DEKCLAS PVC HARNESS CLASP (DK -188F)
40	7006981-0-0	TU56 WIRING HARNESS
41	9007016	GROMMET
42	9008150	LUG #10 COPPER, TIN PLATED
REF	E-AD-7008487-2	TABLE TOP COVER ASSY. (TDCOV KIT)

TITLE TU56 ASSEMBLY
ASSY NO. E-UA-TU56-0-0
SIZE CODE A PL
SHEET 2 OF 3
DISTRIBUTION TU56-0-0

		QUANTITY / VARIATION								
		TU56-H	TU56-M	TU56-MR	TU56-HC	TU56-C	TU56-MD	TU56-MC	TU56-MH	TU56-MJ
1		1	-	-	1	1	1	1	1	1
1		1	1	1	1	1	1	1	1	1
1		1	1	1	1	1	1	1	1	1
1		1	1	1	1	1	1	1	1	1
8		8	16	16	8	16	8	16	8	8
2		2	2	2	2	2	2	2	2	2
1		1	1	1	1	1	1	1	1	1
2		2	2	2	2	2	2	2	2	2
1		1	1	1	1	1	1	1	1	1
2		2	2	2	2	2	2	2	2	2
1		1	1	1	1	1	1	1	1	1
2		2	2	2	2	2	2	2	2	2
1		1	1	1	1	1	1	1	1	1

This drawing and specifications, herein, are the property of Digital Equipment Corporation and shall not be reproduced or copied or used in whole or in part as the basis for the manufacture or sale of items without written permission.

41-0-960110 2



MECHANICAL				ELECTRICAL			
FIND NO.	DESCRIPTION	PART NO.	DEPT USAGE	FIND NO.	DESCRIPTION	PART NO.	DEPT USAGE
1.	TU56 ASSEMBLY	D-UA-TU56-0-0		1.	TU56	A-ML-TU56-0	
	TU56 ASSEMBLY	A-PL-TU56-0-0			MODULE UTILIZATION (TU56)	D-MU-TU56-0-MU	
	CABLE RIBBON M970-M970	D-UA-BC02X-3-0			MODULE UTILIZATION (TU56) (PL)	A-PL-TU56-0-MU	
	HALF COVER PLATE (TU56-H)	D-IA-7407534-0-0			TRANSPORT LOGIC DIAGRAM	D-BS-TU56-0-TLD	
	INFO CONN	C-IA-7405152-1-0			TU56 DEC TAPE	K-WL-TU56-0-2	
	INTERCONNECTION CABLE TU56	C-IA-7006223-0-0			ACCESSORY LIST	A-AL-TU56-0-5	
	OPTIONAL CABLE TU56	D-IA-7006412-0-0			ACCEPTANCE PROCEDURE	A-SP-TU56-0-6	
	MOUNTING BRACKET	C-MD-7408321-0-0		2.	CHASSIS ASSY	E-AD-7006319-1-0	
	SPACER BLOCK	C-MD-7408322-0-0			CHASSIS ASSY	E-AD-7006319-2-0	
	WIRING HARNESS	E-IA-7006981-0-0		3.	FRONT PANEL ASSY	E-AD-7006320-1-0	
					FRONT PANEL ASSY	E-AD-7006320-2-0	
2.	CHASSIS ASSY (TU56)	E-AD-7006319-1-0		6.	CIRCUIT SCHEMATIC	C-CS-5408500-0-1	
	CHASSIS ASSY (TU56-H)	E-AD-7006319-2-0		9.	WIRED ASSY TU56	D-AD-7006321-0-0	
	SCREEN FAN	C-MD-7404881-0-0			WIRED ASSY TU56	A-PL-7006321-0-0	
	CHASSIS ASSY (PL)(TU56)	A-PL-7006319-1-0					
	CHASSIS ASSY (PL)(TU56-H)	A-PL-7006319-2-0					
	CHASSIS	E-IA-7407391-0-0					
	LOCK, PANEL	C-MD-7407399-0-0					
3.	PANEL FRONT ASSY (TU56)	E-AD-7006320-1-0					
	PANEL FRONT ASSY (TU56-H)	E-AD-7006320-2-0					
	PANEL FRONT ASSY (PL)(TU56)	A-PL-7006320-1-0					
	PANEL FRONT ASSY (PL)(TU56-H)	A-PL-7006320-2-0					
	PANEL, MTG	E-MD-7407395-0-0					
	TAPE GUIDE (R.H.)	C-MD-7407283-1-0					
	TAPE GUIDE (L.H.)	C-MD-7407283-2-0					
	COVER PLATE (R.H.)	C-MD-7407282-1-0					
	COVER PLATE (L.H.)	C-MD-7407282-2-0					
	WEAR PLATE (R.H.)	B-MD-7405114-1-0					
	WEAR PLATE (L.H.)	B-MD-7405114-2-0					
	REAR CHECK TAPE GUIDE (L.H.)	C-MD-7405136-1-0					
	REAR CHECK TAPE GUIDE (R.H.)	C-MD-7405136-2-0					
	PIN, LOCK	B-MD-7407400-0-0					
	HUB ASSY 6PT CONTACT	C-IA-7407390-0-0					
	HUB GAUGE	C-IA-7408010-0-0					
	GUARD PLATE	C-MI-7408287-0-0					
4.	PANEL OVERLAY	D-IA-740968-0-0					
	SILK SCREEN (WHITE)	C-SS-740968-0-1					
	SILK SCREEN (BLACK)	C-SS-740968-0-2					
5.	SWITCH CONTROL PANEL ASSY	D-IA-7006222-0-0					
6.	SWITCH CONTROL PANEL	D-IA-5408500-0-0					
7.	SWITCH CONTROL PANEL (ETCH)	D-IA-5008499-0-0					
8.	WIRED ASSY	D-AD-7006321-0-0					
	WIRED ASSY TU56 (PL)	A-PL-7006321-0-0					
	MTG BAR (5 BLOCKS) TU56	C-IA-7407393-0-0					
9.	POWER SUPPLY 725	D-UA-725-0-0					
	POWER SUPPLY 725 (PL)	A-PL-725-0-0					

REV	DATE	BY	CHK'D	DESCRIPTION
A	2-26-70	C. VAILLANT		TU56-00015
B	7-1-70	E. LUTTIG		TU56-00022
C	7-27-70	F.V. LUTTIG		TU56-00032
D	7-15-70	VAILLANT		TU56-00035
E	8-15-70	VAILLANT		TU56-00037
F	8-17-70	VAILLANT		TU56-00050
G	8-17-70	LUTTIG		TU56-00052
H	8-17-70	LUTTIG		TU56-00052
I	8-24-70	LUTTIG		TU56-00071
J	8-24-70	LUTTIG		TU56-00071
K	8-24-70	LUTTIG		TU56-00068
L	8-24-70	LUTTIG		TU56-00071
M	8-24-70	LUTTIG		TU56-00072
N	8-24-70	LUTTIG		TU56-00076
O	8-24-70	LUTTIG		TU56-00077
P	8-24-70	LUTTIG		TU56-00080
Q	8-24-70	LUTTIG		TU56-00080
R	8-24-70	LUTTIG		TU56-00080

FIRST USED ON OPTION/MODEL TU56	QTY.	DESCRIPTION	PART NO.	ITEM NO.
UNLESS OTHERWISE SPECIFIED				
DIMENSION IN INCHES				
TOLERANCES				
DECIMALS	FRACTIONS	ANGLES		
± .005	± 1/64	± 0°30'		
FINAL SURFACE QUALITY				
REMOVE BURRS AND BREAK SHARP CORNERS				
MATERIAL	NEXT HIGHER ASSY			
	A-ML-TU56-0			
FINISH	SCALE	SHEET OF		
		DIST		

digital EQUIPMENT CORPORATION
MAYNARD, MASSACHUSETTS

DWG INDEX LIST
TU56

SIZE CODE: **D** NUMBER: **DI/TU56-0-1** REV: **1**

DRWG NO
K-WL-TU56-Ø-2

REVISIONS			
REV LTR	ECO NO	DATE	ENG
A	TU56-00005	12-8-69	E.K.
B	TU56-00009	1-30-70	E.K.
C	TU56-00021	4-13-70	E.K.
D	TU56-00026	5-21-70	E.K.

FIRST USED ON OPTION/MODEL
TU56

DRAWN GULICK	DATE 7-8-69
CHECKED <i>A. Wain</i>	DATE 8-20-69
ENG <i>[Signature]</i>	DATE [Signature]
PROJ ENG <i>[Signature]</i>	DATE [Signature]
PROD <i>[Signature]</i>	DATE [Signature]



TITLE
TU56
DEC TAPE

FOR TAPE # FILE *

ASSY
TU56

SCALE NONE SHEET | OF |

SIZE K	CODE WL	DWG. NO. TU56-Ø-2	REV LTR D
DIST.			

This drawing and specifications, herein, are the property of Digital Equipment Corporation and shall not be reproduced or copied or used in whole or in part as the basis for the manufacture or sale of items without written permission.

Drawing Number: TU56-0-MU-2

8	7	6	5	4	3	2	1
TU56-H							
USAGE 1 MOTOR DRIVE 2	USAGE 1 MOTOR DRIVE 2	USAGE 1 CLK & REG 2	USAGE 1 LEVEL AMP 2	USAGE 1 BUS CONV. 2	USAGE 1 CABLE 2	USAGE 1 CABLE 2	USAGE 1 SOLEN DRIVE 2
GR48	GR48	GR59	M941	M531	M908	M908	M941
LEFT FWD	LEFT REV	L-RESET OSC1 OSC0	L WRT ENAB STOP GO REV REM FWD REM ALL HALT L SEL CODE	STOP GO REV REM FWD REM ALL HALT L SEL CODE	CON STOP CON GO CON REV CON FWD CON ALL CON PWR T/M EN WRITE ECHO SEL	CON STOP CON GO CON REV CON FWD CON ALL CON PWR T/M EN WRITE ECHO SEL	L DISCON L SELECT ECHO
USAGE 1 DUAL MR V CON 2	USAGE 1 DUAL MR V CON 2	USAGE 1 DUAL MR V CON 2	USAGE 1 DUAL MR V CON 2	USAGE 1 DUAL MR V CON 2	USAGE 1 DUAL MR V CON 2	USAGE 1 DUAL MR V CON 2	USAGE 1 DUAL MR V CON 2
GR47	M922	M113	M113	M113	M117	M382	M382
FWD	L WRT ENAB L REM L OFF L REV LOCAL L FWD LOCAL L HOLD L DISCON	SEL 7 SEL 6 SEL 5 SEL 4 SEL 3 SEL 2 SEL 1 SEL 0	L MO0 L MO1 L MO0 L DIR I L DIR 0 L DIR 0 L REV	L MO0 L MO1 L MO0 L DIR I L DIR 0 L DIR 0 L REV	L MO0 L MO1 L MO0 L DIR I L DIR 0 L DIR 0 L REV	L MO0 L MO1 L MO0 L DIR I L DIR 0 L DIR 0 L REV	L BRAKE R BRAKE

23	24	25	26	27	28	29	30	31	32	33	34	35	36	37	38	39	40	41	42	43	44
TU56-H																					
USAGE 1																					
USAGE 2																					

<p>* G888 READ/WRITE AMPLIFIERS ARE OFFERED AS A CUSTOMER OPT. FOR SPECIAL APPLICATIONS NOT REQUIRING A DECTAPE CONTROL. THE W032 CABLE MUST BE REPLACED WITH A M923 CABLE AS PART OF THIS OPTION. ATU56 INCLUDING THIS OPTION IS DESIGNATED ATU56M, AND ATU56H INCLUDING THIS OPTION IS DESIGNATED ATU56MH</p>																					
---	--	--	--	--	--	--	--	--	--	--	--	--	--	--	--	--	--	--	--	--	--

REV	DATE	BY	DESCRIPTION
1	2-2-70	E. LUTTIG	REVISED
2	5/22/70	E. LUTTIG	REVISED
3	10/1/70	E. LUTTIG	REVISED
4	10/1/70	E. LUTTIG	REVISED
5	10/1/70	E. LUTTIG	REVISED
6	10/1/70	E. LUTTIG	REVISED
7	10/1/70	E. LUTTIG	REVISED
8	10/1/70	E. LUTTIG	REVISED

△ IF CONN. TO ANOTHER TU56 USE CABLE #D-UA-BC02X-3-0. IF CONN. TO TU55 USE CABLE #D-IA-7006223-0-0

** THE M941 JUMPER MODULES ARE REPLACED WITH W513 LEVEL AMPLIFIER MODULES WHEN THE TU56 IS CONNECTED TO A RELAY DRIVER TYPE CONTROL.

*** G742 JUMPER CARD REPLACES M531 WHEN TU56 IS USED WITH POSITIVE OUTPUT LOGIC CONTROL

FIRST USED ON OPTION/MODEL TU56

IF TU56 IS REQ'D USE ALL MODULES & CABLES SHOWN WITH THE EXCEPTION OF NOTES LISTED ABOVE. IF TU56-H IS REQ'D ONLY MODULES & CABLES IND. BY ARROWS ARE USED

DO NOT SCALE DRAWING	DRN: R. K. TULLY	DATE: 7-24-69
UNLESS OTHERWISE SPECIFIED DIMENSION IN INCHES	CHK'D: D. WOOD	DATE: 8/19/69
TOLERANCES	ENG: [Signature]	DATE: 8/16/69
DECIMALS FRACTIONS ANGLES	PROJ. ENG: [Signature]	DATE: 7/26/69
0.005 1/64 0°30'	PROD. [Signature]	DATE: 8/20/69
REMOVE BURRS AND BREAK SHARP CORNERS	MATERIAL: [Blank]	NEXT HIGHER ASSY: A-ML-TU56-0
FINISH: [Blank]	SCALE: [Blank]	SHEET: 1 OF 1

digital EQUIPMENT CORPORATION
MAYNARD, MASSACHUSETTS

MODULE UTILIZATION

SIZE CODE: D MU NUMBER: TU56-0-MU REV: 11

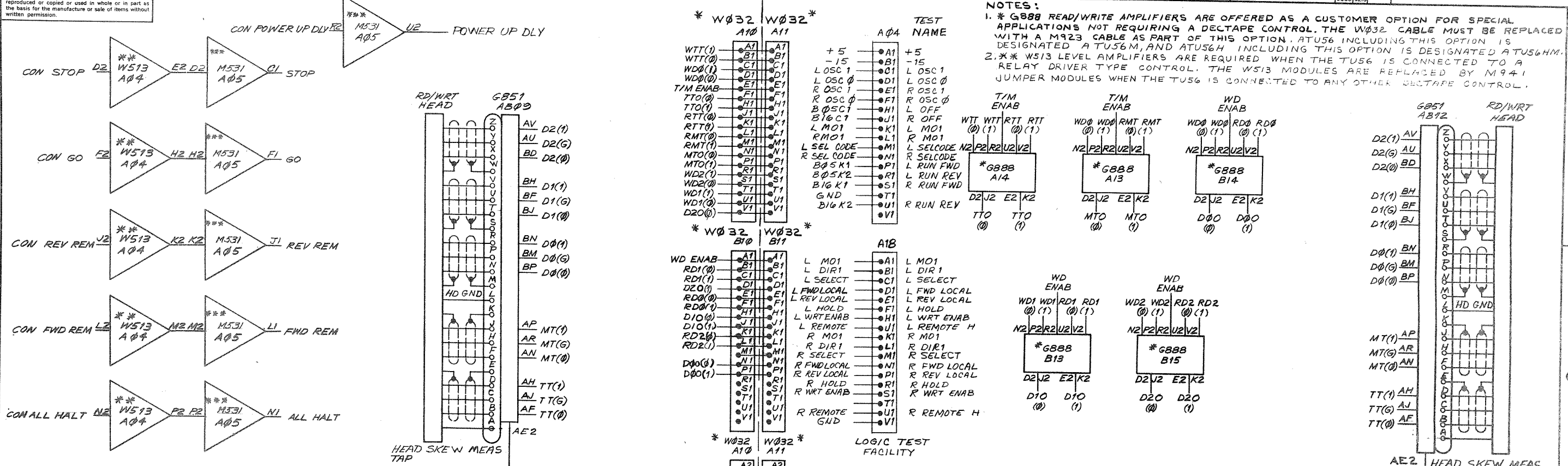
REV. H TU56-0-MU

DIGITAL EQUIPMENT CORPORATION MAYNARD, MASSACHUSETTS PARTS LIST			QUANTITY/VARIATION											
MADE BY R. RYHER		CHECKED D. HEALY	SECTION		TU56-Ø-MU	TU56-H-MU	TU56-M-MU	TU56-MH-MU	TU56-MR-MU	TU56-MJ-MU	TU56-C-MU	TU56-HC-MU	TU56-MC-MU	TU56-MD-MU
DATE 7/23/69		DATE 8/6/69	1											
ENG <i>e. J. ...</i>		PROD <i>e. J. ...</i>	ISSUED SECT.											
DATE 8/26/69		DATE 8/26/69	1											
ITEM NO.	DWG NO. / PART NO.	DESCRIPTION			TU56-Ø-MU	TU56-H-MU	TU56-M-MU	TU56-MH-MU	TU56-MR-MU	TU56-MJ-MU	TU56-C-MU	TU56-HC-MU	TU56-MC-MU	TU56-MD-MU
	G859	CLOCK REGULATOR G859			1	1	1	1	1	1	1	1	1	1
	W513	LEVEL AMPLIFIER W513*			2	1	2	1	2	1	0	0	0	0
	M5Ø7	BUS CONVERTER M5Ø7			2	2								
	M531	NEGATIVE INPUT CONVERTER			1	1	1	1	1	1	0	0	0	0
	MØ4Ø	SOLENOID DRIVER MØ4Ø			2	1	2	1	2	1	2	1	2	1
	G851	RELAY G851			2	1	2	1	2	1	2	1	2	1
	G888	MANCHESTER READER, WRITER G888			Ø	Ø	5	5	5	5	0	0	5	5
	M117	6-4 INPUT NAND GATES M117			2	1	2	1	2	1	2	1	2	1
	M113	10-2 INPUT NAND GATES M113			3	2	3	2	3	2	3	2	3	2
	M3Ø2	DUAL DELAY MULTIVIBRATOR M3Ø2			1	1	1	1	1	1	1	1	1	1
	G848	MOTOR DRIVE			4	2	4	2	4	2	4	2	4	2
	G847	DUAL MOTOR CON			2	1	2	1	2	1	2	1	2	1
	M941	JUMPER/EXTENDER			2	1	2	1	2	1	2	1	2	1
	G742	+ LOGIC JUMPER			1	1	1	1	1	1	1	1	1	1
	* NOTE: SEE	D-MU-TU56-Ø-MU												
TITLE		ASSY NO.	SIZE	CODE	NUMBER			REV.	ECO NO.					
MODULE UTILIZATION LIST		D-MU-TU56-Ø-MU	A	PL	TU56-Ø-MU			H	TU56-00072					
SHEET 1 OF 1		DIST.												

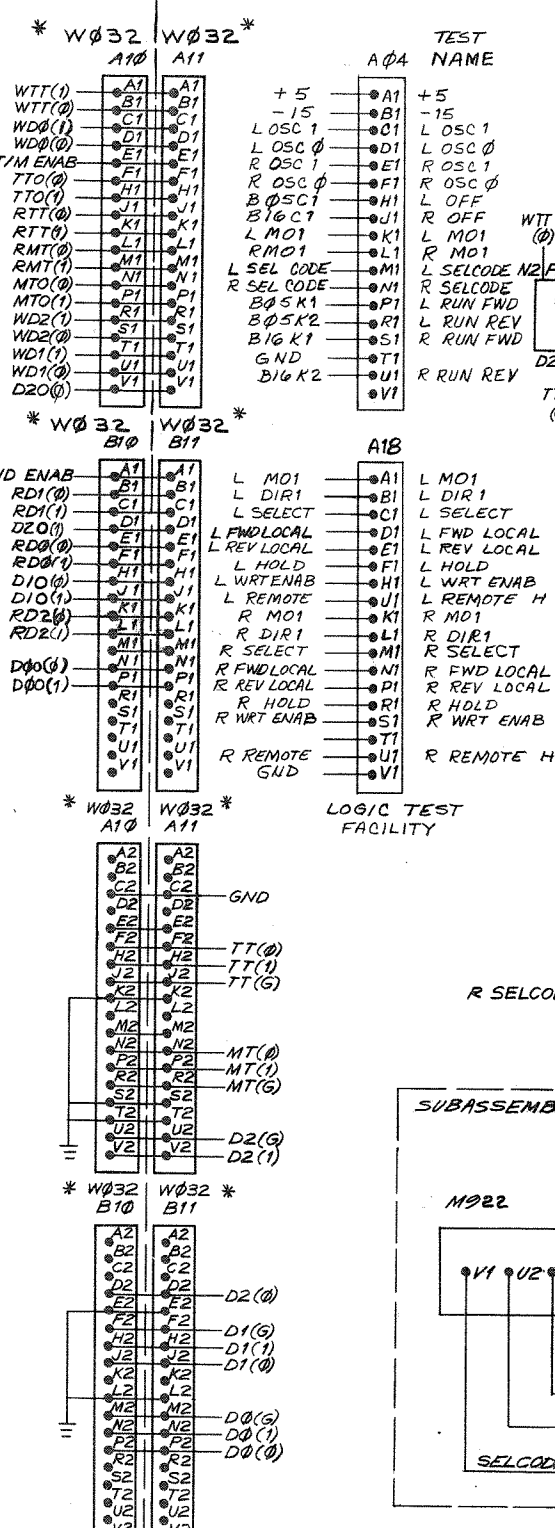
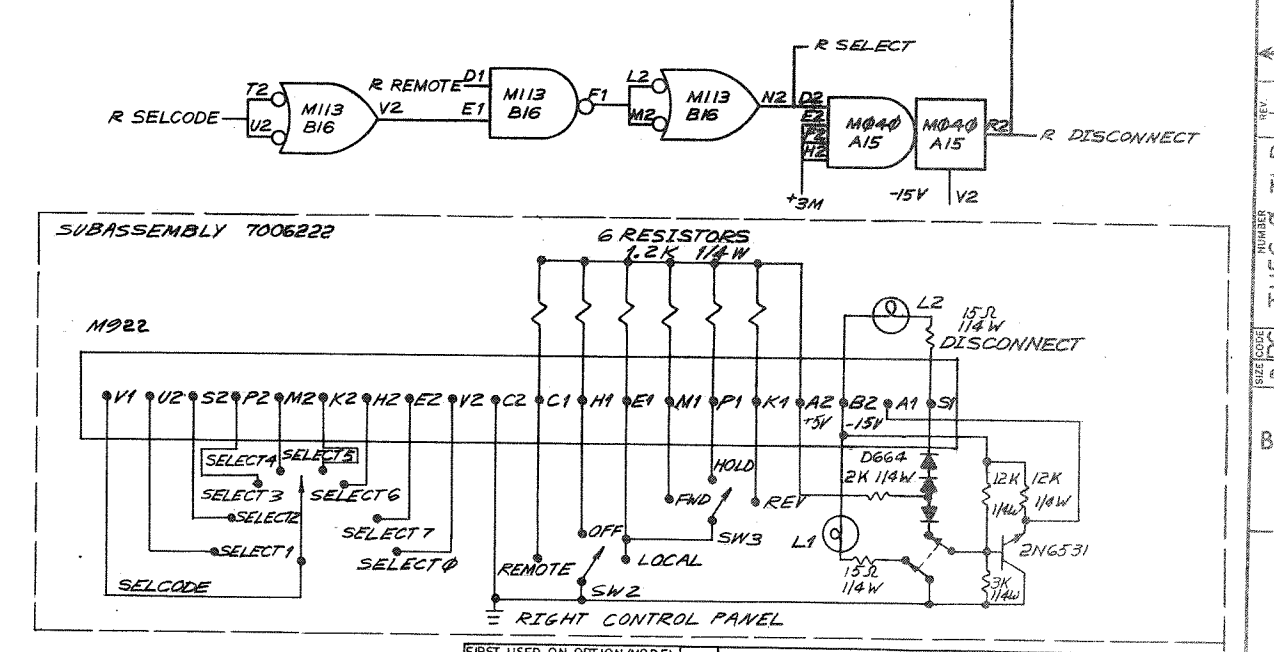
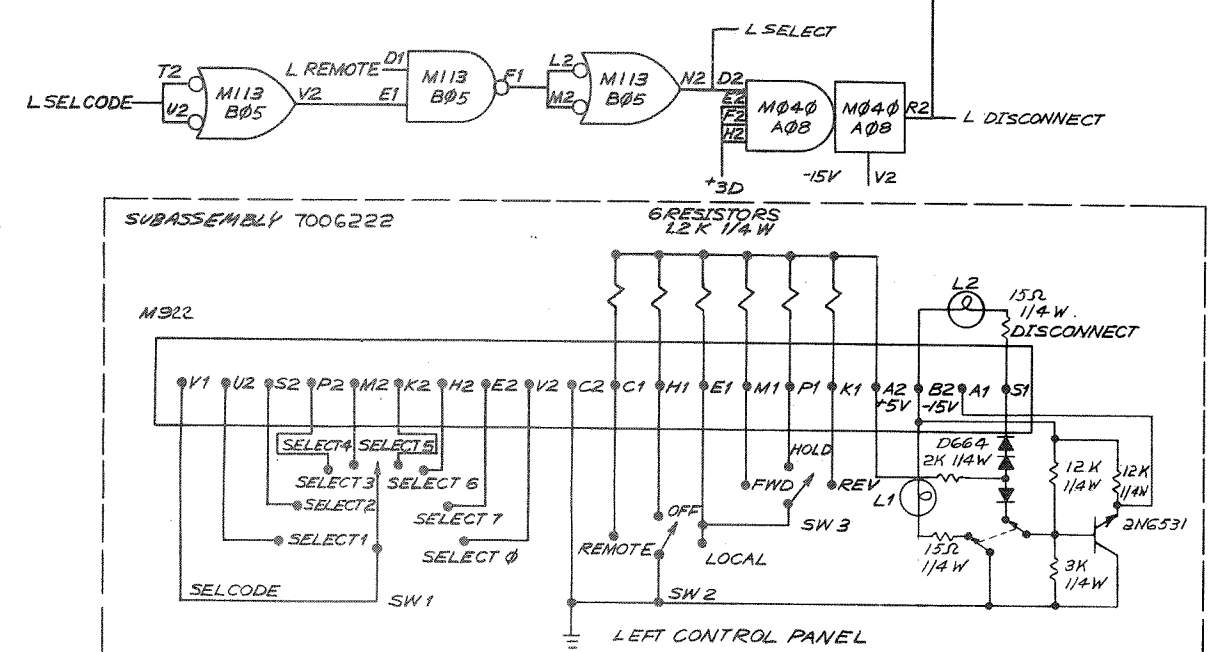
DEC FORM NO. DRA 110

Unless otherwise specified, drawings and specifications herein are the property of Digital Equipment Corporation and shall not be reproduced or copied or used in whole or in part as the basis for the manufacture or sale of items without written permission.

7 071-0-9901 2



NOTES:
 1. * G888 READ/WRITE AMPLIFIERS ARE OFFERED AS A CUSTOMER OPTION FOR SPECIAL APPLICATIONS NOT REQUIRING A DECTAPE CONTROL. THE W032 CABLE MUST BE REPLACED WITH A M923 CABLE AS PART OF THIS OPTION. ATU56 INCLUDING THIS OPTION IS DESIGNATED ATU56M, AND ATU56H INCLUDING THIS OPTION IS DESIGNATED ATU56HM.
 2. ** WS13 LEVEL AMPLIFIERS ARE REQUIRED WHEN THE TU56 IS CONNECTED TO A RELAY DRIVER TYPE CONTROL. THE WS13 MODULES ARE REPLACED BY M941 JUMPER MODULES WHEN THE TU56 IS CONNECTED TO ANY OTHER DECTAPE CONTROL.



REV	CHANGE NO.

FIRST USED ON OPTION/MODEL TU56	QTY.	DESCRIPTION	PART NO.	ITEM NO.
UNLESS OTHERWISE SPECIFIED DIMENSION IN INCHES TOLERANCES DECIMALS FRACTIONS ANGLES ± .005 ± 1/64 ± 0°30'	DRN. <i>R. Rother</i>	DATE <i>7-9-64</i>	PARTS LIST	
UNLESS OTHERWISE SPECIFIED DIMENSION IN INCHES TOLERANCES DECIMALS FRACTIONS ANGLES ± .005 ± 1/64 ± 0°30'	CHK'D. <i>D. Galy</i>	DATE <i>8-9-64</i>	digital EQUIPMENT CORPORATION MAYNARD, MASSACHUSETTS	
MATERIAL	PROJ. ENG. <i>E. Luthy</i>	DATE <i>8/2/64</i>	TITLE TRANSPORT LOGIC DIAGRAM	
FINISH	PROD. DATE <i>8/2/64</i>	DATE <i>8/2/64</i>	NEXT HIGHER ASSY A-ML-TU56-0	
	SCALE <i>++</i>	SHEET <i>2 OF 2</i>	SIZE CODE D BS	NUMBER TU56-0-TLD
			DIST.	REV L

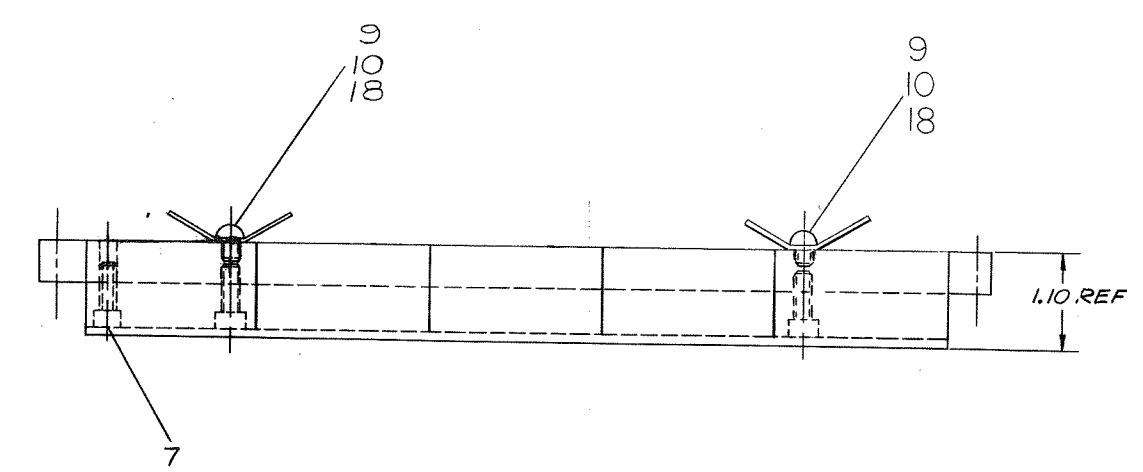
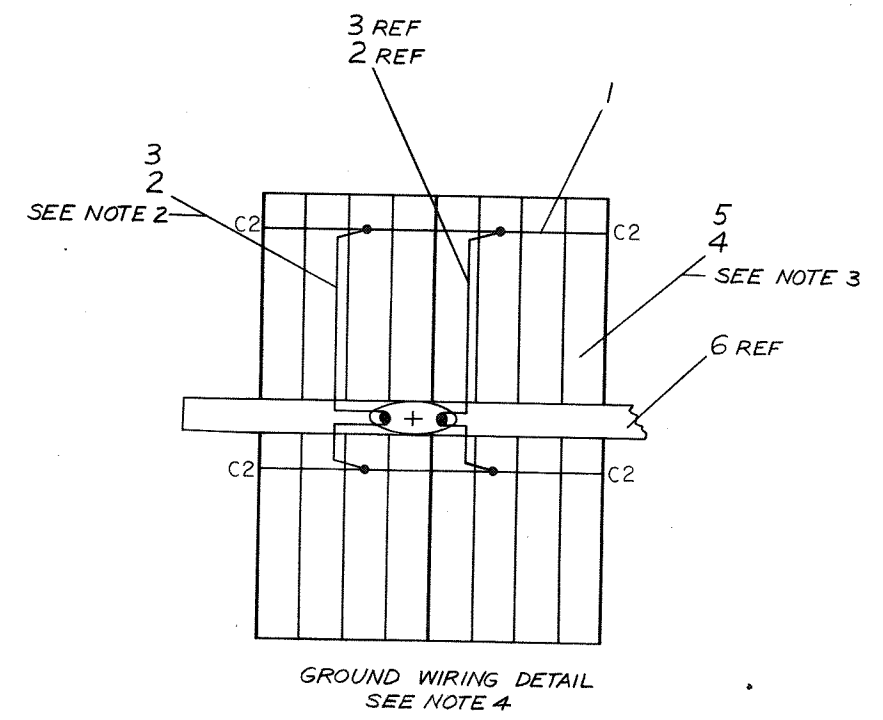
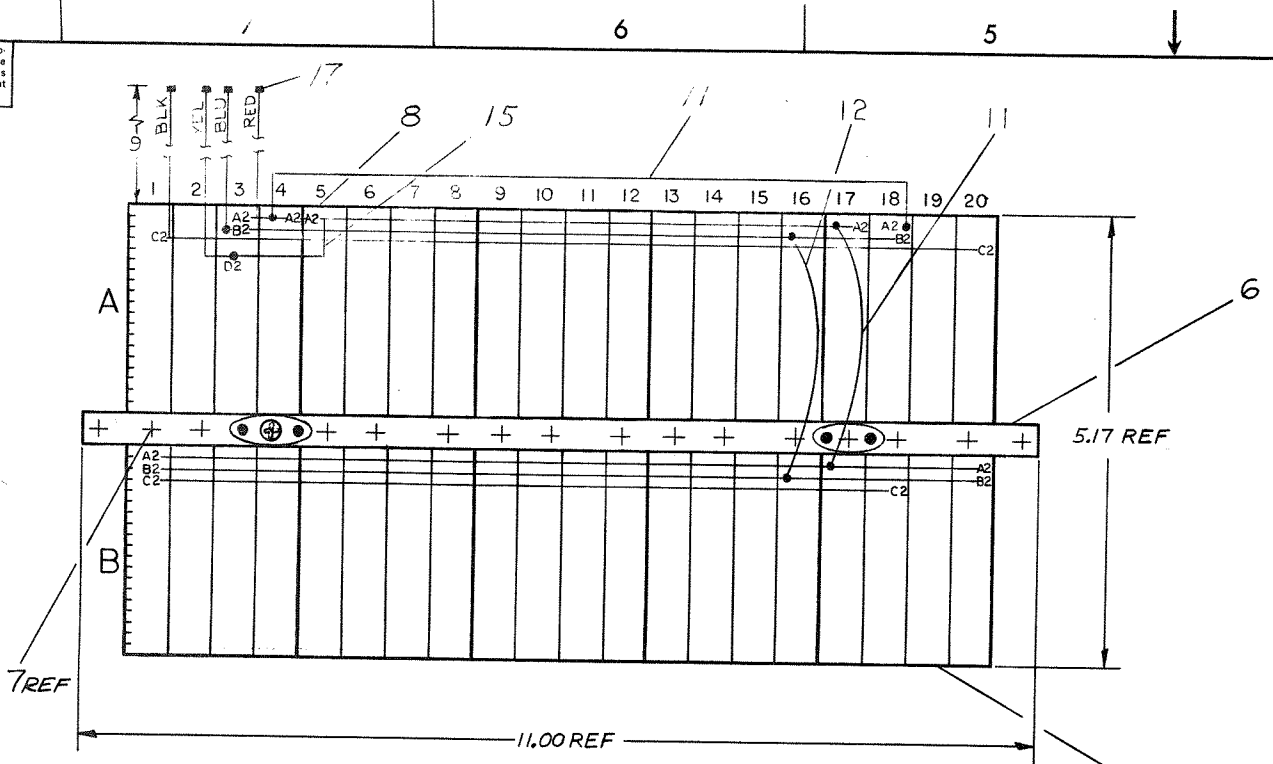
LEFT HAND TRANSPORT RIGHT HAND TRANSPORT
 CONT.
 3. *** G742 JUMPER CARD REPLACES M531 WHEN TU56 IS USED WITH POS OUTPUT LOGIC CONT.

This drawing and specifications herein are the property of Digital Equipment Corporation and shall not be reproduced or copied or used in whole or in part as the basis for the manufacture or sale of items without written permission.

J 0-0-123900Z
7006321-0-0
REV. 2

ITEM NO.	COMP	POL	FROM	TO	POL
13	RESISTOR	X	A08S2	A06P1	X
13	RESISTOR	-	A08N2	A07P1	-
14	CAPACITOR	-	B08F1	A08L2	+
14	CAPACITOR	-	B08R1	B08S2	+

- NOTES:
- CONNECTIONS ON ITEMS #1 & #2 TO BE SOLDERED AND LOCATED AT MINIMUM PRACTICAL HEIGHT ABOVE BLOCK
 - CONN BLOCK TO BE GROUNDED TO GND LUG AS SHOWN
 - USE YELLOW WIRE (ITEM #3) FOR MACHINE WRAPPED & BLUE WIRE (ITEM #4) FOR HAND WRAPPED WIRING
 - JUMPER GROUND BUSSING AS SHOWN IN PLACE



REV	CHANGE NO	DATE	BY
A	TU56-00005		
B	TU56-00013	3/1/69	
C	TU56-00017	2-27-70	
D	TU56-00055	3/19/70	
E	TU56-00062	3/8/71	
F	TU56-00001	3/2/71	
G	TU56-00002	3/8/71	
H	TU56-00002	3/8/71	
I	TU56-00002	3/8/71	
J	TU56-00002	3/8/71	
K	TU56-00002	3/8/71	
L	TU56-00002	3/8/71	
M	TU56-00002	3/8/71	
N	TU56-00002	3/8/71	
O	TU56-00002	3/8/71	
P	TU56-00002	3/8/71	
Q	TU56-00002	3/8/71	
R	TU56-00002	3/8/71	
S	TU56-00002	3/8/71	
T	TU56-00002	3/8/71	
U	TU56-00002	3/8/71	
V	TU56-00002	3/8/71	
W	TU56-00002	3/8/71	
X	TU56-00002	3/8/71	
Y	TU56-00002	3/8/71	
Z	TU56-00002	3/8/71	

FIRST USED ON OPTION/ MODEL	DO NOT SCALE DRAWING
TU56	UNLESS OTHERWISE SPECIFIED
	DIMENSION IN INCHES
	TOLERANCES
	DECIMALS
.XXX	= ± .005
.XX	= ± .02
.X	= ± .1

QTY.	DESCRIPTION	PART NO.	ITEM NO.
	WIRED ASSY		
	TU56		

digital EQUIPMENT CORPORATION
MAYNARD, MASSACHUSETTS

TITLE
WIRED ASSY
TU56

SIZE CODE: DAD
NUMBER: 7006321-0-0
REV: F

7006321-0-0

DIGITAL EQUIPMENT CORPORATION
MAYNARD, MASSACHUSETTS
PARTS LIST

MADE BY KEN GULICK	CHECKED D. HEALY	SECTION
DATE 6/19/69	DATE 7/23/69	1
ENG <i>E. Gulick</i>	PROD <i>C. R. Templeman</i>	ISSUED SECT.
DATE 8/26/69	DATE 8/26/69	1

QUANTITY / VARIATION

ITEM NO.	DWG NO. / PART NO.	DESCRIPTION																		
1	1205541	BUS STRIP	A/R																	
2	9107560-01	22 AWG BUS WIRE	A/R																	
3	9107265-09	#22 TUBING, TEFLON, WHITE	A/R																	
4	9105740-44	30 AWG SOLID TEF INS. WIRE, YELLOW	A/R																	
5	9105740-66	30 AWG SOLID TEF INS. WIRE, BLUE	A/R																	
6	6-IA-7407393-0-0	MTG BAR (5 BLOCKS) TU56	1																	
7	9006120	SCR. PHL HD SELF-TAPPING 8-32 x 5/8	10																	
8	1205348	288 PIN CONN BLOCK	5																	
9	9006775	TERMINAL #2116-08-00 SHAKEPROOF	2																	
10	9008143	SCR. PHL HD SELF-TAPPING 8-32 x 1/2	2																	
11	9107350-22	22 AWG STRD TEF INS WIRE, RED	A/R																	
12	9107530-66	22 AWG STRD TEF INS WIRE, BLU	A/R																	
13	7408016	RESISTOR 100 OHMS 1/4 W 5% CCW/TERMI PTS	2																	
14	7408016	CAPACITOR 22 MFD 35V S. TANT W/TERMI PTS	2																	
REF	K-WL-TU56-0-2	WIRE LIST	X																	
15	9107350-44	22 AWG STRD TEF INS WIRE, YEL	A/R																	
16	9107350-00	22 AWG STRD TEF INS WIRE, BLK	A/R																	
17	9007917	CONN. SOLDERLESS #50902 ARKLES	4																	
18	9006634	WASHER INT #8	2																	

TITLE	ASSY NO.	SIZE CODE	NUMBER	REV.	ECO NO.
WIRED ASSY TU56	D-AD-7006321-0-0	A PL	7006321-0-0	E	7006321-0000L
DEC FORM NO. DRA 110	SHEET 1 OF 1	DIST.			

7006321-0

DIGITAL EQUIPMENT CORPORATION
MAYNARD, MASSACHUSETTS

ACCESSORY LIST

MADE BY J. INGLEDEUE
DATE 5-31-72
ENG H. DRAB
DATE 7-7-72

CHECKED 7-7-72
DATE FOR J. INGLEDEUE
H. DRAB
PROD
DATE

SECTION 1
ISSUED SECT. 2

LEGEND
D DOCUMENT
DN DOCUMENT CHANGE
NOTICE
PA PAPER TAPE ASCII
PB PAPER TAPE BINARY
PM PAPER TAPE
READ-IN-MODE

ITEM NO.	DWG NO. / PART NO.	DESCRIPTION	QUANTITY	VARIATION
1.	TUC-01	Head Cleaning Kit	1	TU56-H
2.	1209331	Take Up Reel	2	TU56-G
3.	7405996	Certified Dec Tape 12 Bit Format **	2	TU56-MH
4.	7405996-1	Certified Dec Tape 18 Bit Format ***	2	TU56-M
5.	A-ML-TU56-0	Print Set (When not included in control printset)	1	TU56-H
6.	Dec-00-HRTB-D	Maintenance Manual	1	TU56
7.	BC02X-03	Select Cable *	1	TU56-HC
8.	7405152-1	Head Cable *	1	
9.	7408321	Mounting Bracket *	1	
10.	7408322	Spacer Block *	2	

Note: For Positive Logic Interface G742 Jumper Module Replaces M531.

***Supply with units for use on PDP1,4,6,7,9,10,11,15

** Supply with units for use on PDP5,12,8

* Loose Piece when shipped as add-on, stand alone

TITLE TU56 ACCESSORY LIST

ASSY. NO.

SIZE CODE
A A L

NUMBER
TU56-0-5

REV. F
ECO NO
TU56-0003

DIGITAL EQUIPMENT CORPORATION
MAYNARD, MASSACHUSETTS

ACCESSORY LIST

MADE BY J. INGLEDEUE
DATE 5-31-72
ENG H. DRAB
DATE 7-7-72

CHECKED 7-7-72
DATE H. DRAB
PROD
DATE

SECTION 2
ISSUED SECT. 2

LEGEND
D DOCUMENT
DN DOCUMENT CHANGE
NOTICE
PA PAPER TAPE ASCII
PB PAPER TAPE BINARY
PM PAPER TAPE
READ-IN-MODE

ITEM NO.	DWG NO. / PART NO.	DESCRIPTION	QUANTITY	VARIATION
1.	TUC-01	Head Cleaning Kit	1	TU56-MR
2.	1209331	Take Up Reel	2	TU56-MC
3.	7405996	Certified Dec Tape 12 Bit Format **	2	TU56-MJ
4.	7405996-1	Certified Dec Tape 18 Bit Format ***	0	
5.	A-ML-TU56-0	Print Set (When not included in Control Print Set)	1	
6.	DEC-00-HRTB-D	Maintenance Manual	1	
7.	BC02X-03	Select Cable *	0	
8.	7405152-1	Head Cable *	0	
9.	7408321	Mounting Bracket *	0	
10.	7408322	Spacer Block *	0	

T ACCESSORY LIST

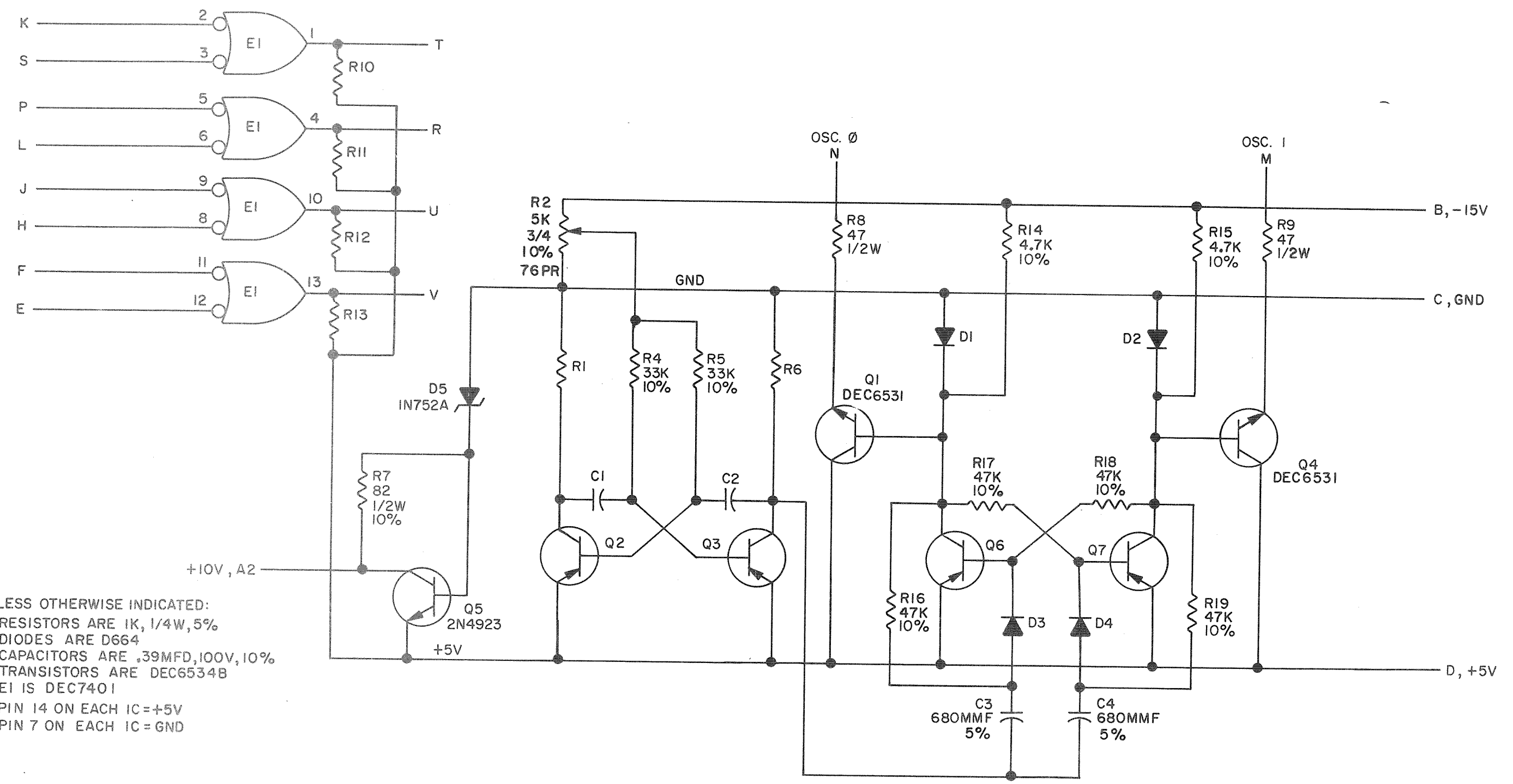
ASSY. NO.

SIZE CODE
A A B

NUMBER
TU56-0-5

REV. F
ECO NO
TU56-0003

THIS SCHEMATIC IS FURNISHED ONLY FOR TEST AND MAINTENANCE PURPOSES. THE CIRCUITS ARE PROPRIETARY IN NATURE AND SHOULD BE TREATED ACCORDINGLY. COPYRIGHT 1969 BY DIGITAL EQUIPMENT CORPORATION



UNLESS OTHERWISE INDICATED:
 RESISTORS ARE 1K, 1/4W, 5%
 DIODES ARE D664
 CAPACITORS ARE .39MFD, 100V, 10%
 TRANSISTORS ARE DEC6534B
 E1 IS DEC7401
 PIN 14 ON EACH IC = +5V
 PIN 7 ON EACH IC = GND

REVISIONS	
CHK	REV
00001	A
00002	B
00003	C

DRN. <i>BUTLER</i>	DATE 11-13-69
CHK'D <i>V. Smith</i>	DATE 11-17-69
ENG. <i>E. Lutting</i>	DATE 1/24/69
PROD.	DATE

TRANSISTOR & DIODE CONVERSION CHART			
DEC	EIA	DEC	EIA
D664	IN3606		
DEC6534B	MPS6534B		
DEC6531	MPS6531		
2N4923	SAME		

digital
 EQUIPMENT CORPORATION
 MAYNARD, MASSACHUSETTS

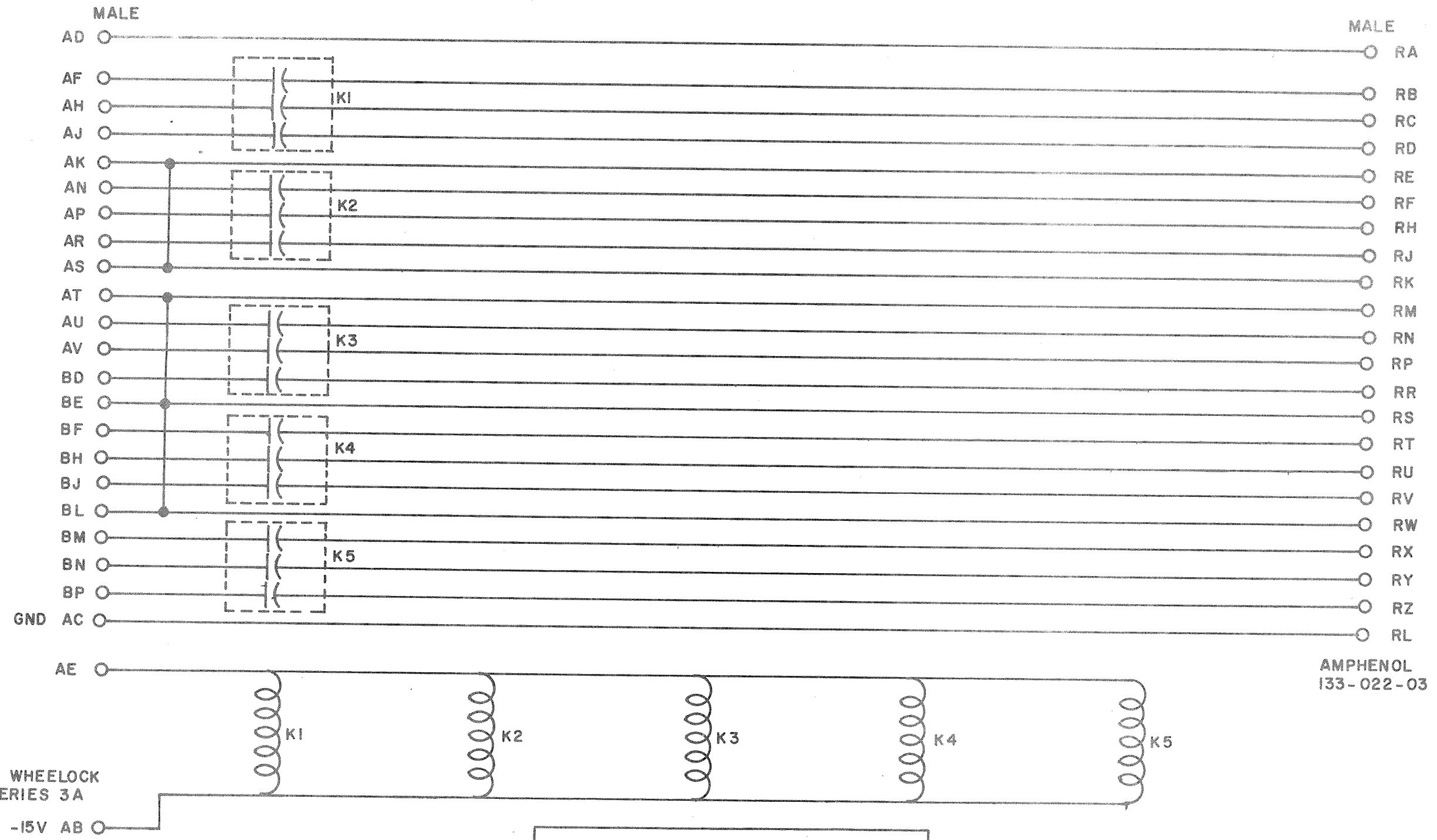
TITLE CLOCK & REGULATOR G859			
SIZE B	CODE CS	NUMBER G859-0-1	REV. C
PRINTED CIRCUIT REV.			A

M. L. 11-17-69

4 PINK

DIST. 3211, 434, 435

THIS SCHEMATIC IS FURNISHED ONLY FOR TEST AND MAINTENANCE PURPOSES. THE CIRCUITS ARE PROPRIETARY IN NATURE AND SHOULD BE TREATED ACCORDINGLY. COPYRIGHT 1965 BY DIGITAL EQUIPMENT CORPORATION



AMPHENOL
133-022-03

NOTE:
RELAYS ARE WHEELOCK
REED, 260 SERIES 3A
12V DC

REVISIONS	CHK	CHG NO	REV.
	DAW	4613	1
	REV & REDR.	5196	B

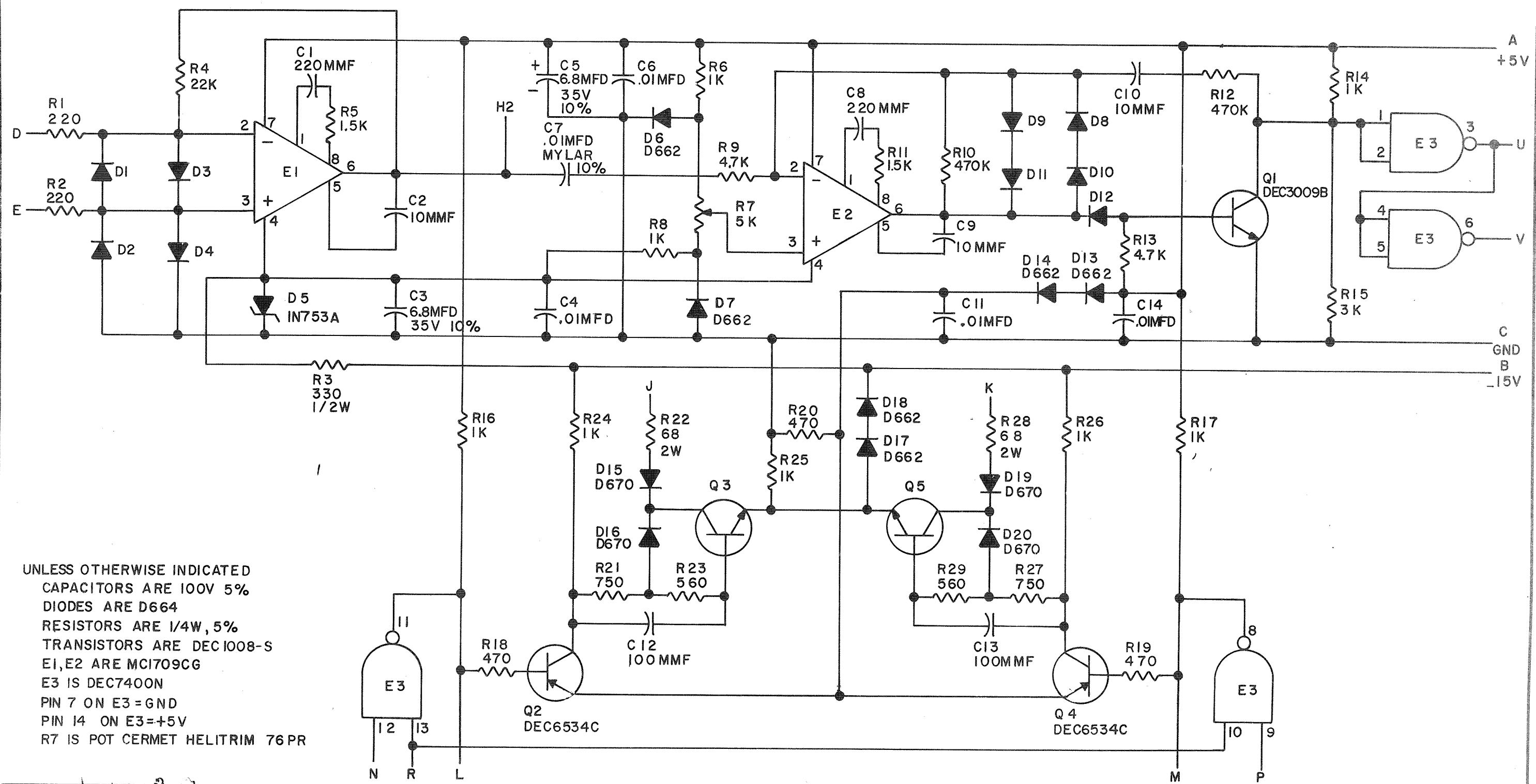
DRN. H.W. PORTER	DATE 1-13-65
CHK'D N. PERRYMAN	DATE 1-25-65
ENG. D. WARDIMAN	DATE 1-25-65
PROD.	DATE

TRANSISTOR & DIODE CONVERSION CHART			
DEC	EIA	DEC	EIA

digital
EQUIPMENT
CORPORATION
MAYNARD, MASSACHUSETTS

TITLE RELAY G851			
SIZE B	CODE CS	NUMBER G851-0-1	REV. B
PRINTED CIRCUIT REV.			B

THIS SCHEMATIC IS FURNISHED ONLY FOR TEST AND MAINTENANCE PURPOSES. THE CIRCUITS ARE PROPRIETARY IN NATURE AND SHOULD BE TREATED ACCORDINGLY. COPYRIGHT 1969 BY DIGITAL EQUIPMENT CORPORATION



UNLESS OTHERWISE INDICATED
 CAPACITORS ARE 100V 5%
 DIODES ARE D664
 RESISTORS ARE 1/4W, 5%
 TRANSISTORS ARE DEC1008-S
 E1, E2 ARE MC1709CG
 E3 IS DEC7400N
 PIN 7 ON E3 = GND
 PIN 14 ON E3 = +5V
 R7 IS POT CERMET HELITRIM 76 PR

REVISIONS	CHK	CHG NO.	REV.
		6888	A

DRN.	DATE
<i>A. Clement</i>	8-29-69
CHK'D	DATE
<i>J. D. Hallett</i>	9/3/69
ENG.	DATE
<i>J. Calver</i>	9/25/69
PROD.	DATE

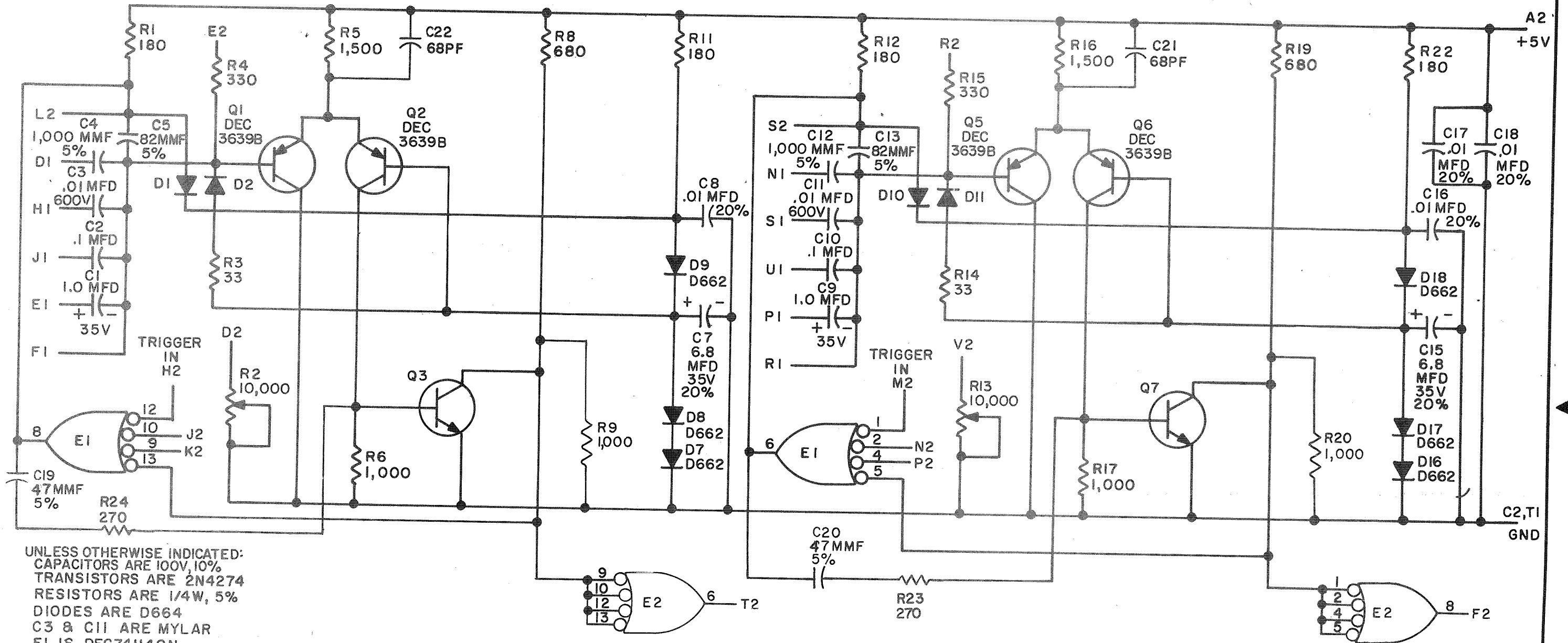
TRANSISTOR & DIODE CONVERSION CHART			
DEC		EIA	
D664	IN3606	DEC1008-S	MM1008
D662	IN645		
D670	SAME		
DEC3009B	2N3009B		
DEC6534C	MPS6534		



TITLE			
MANCHESTER READER/WRITER G888			
SIZE	CODE	NUMBER	REV.
B	CS	G888-0-1	B
PRINTED CIRCUIT REV.			A

THIS SCHEMATIC IS FURNISHED ONLY FOR TEST AND MAINTENANCE PURPOSES. THE CIRCUITS ARE PROPRIETARY IN NATURE AND SHOULD BE TREATED ACCORDINGLY. COPYRIGHT 1967 BY DIGITAL EQUIPMENT CORPORATION

REV. L
NUMBER M302-0-1
SIZE CODE B CS



UNLESS OTHERWISE INDICATED:
CAPACITORS ARE 100V, 10%
TRANSISTORS ARE 2N4274
RESISTORS ARE 1/4W, 5%
DIODES ARE D664
C3 & C11 ARE MYLAR
E1 IS DEC74H40N
PIN 7 ONIC'S = GND
PIN 14 ONIC'S = +5V
R2 & R13 ARE HELITRIM POT #78PR
1.0MFD CAPACITORS ARE TANTALUM
Q2 IS DEC7413N

PARTS LIST A-PL-M302-0-0

REV.	CHG. NO.	B	C	D	E	F	H	J	K	L
6507	6719	6881	7077	00001	00002	00003	00004			

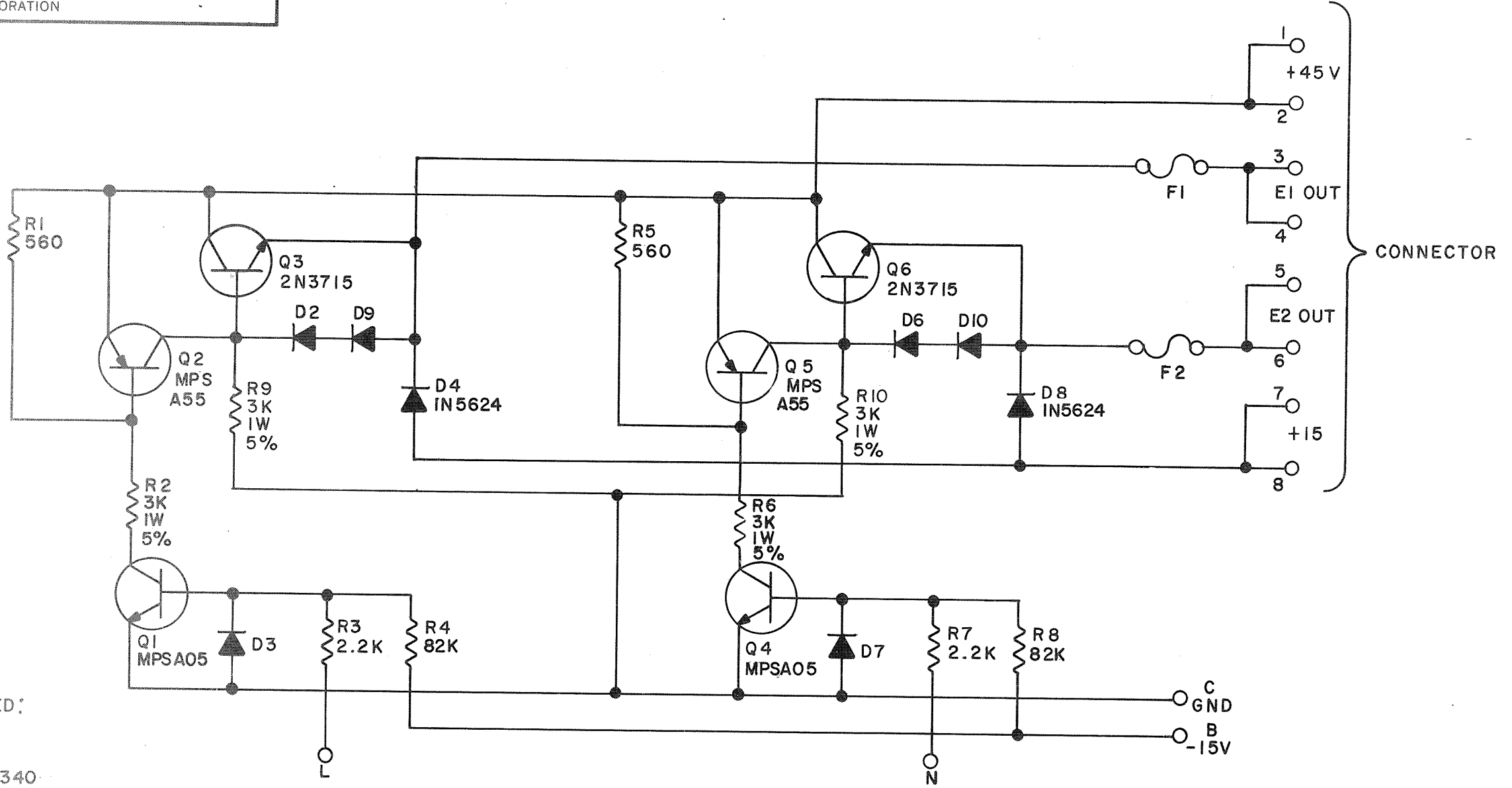
DRN. <i>M. Waller</i>	DATE 6-15-67
CHK'D <i>[Signature]</i>	DATE 6/21/67
ENG. <i>L. White</i>	DATE 6/21/67
PROD. 1	DATE

TRANSISTOR & DIODE CONVERSION CHART			
DEC	EIA	DEC	EIA
2N4274	SAME		
DEC3639B	2N3639		
D662	IN645		
D664	IN3606		

digital
EQUIPMENT CORPORATION
MAYNARD, MASSACHUSETTS

TITLE ONE SHOT DELAY M302			
SIZE B	CODE CS	NUMBER M302-0-1	REV. L
PRINTED CIRCUIT REV.			L

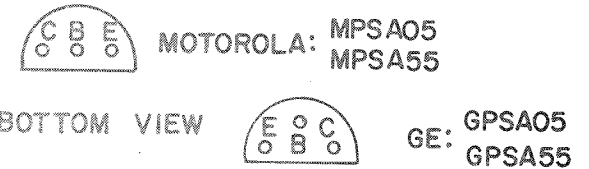
THIS SCHEMATIC IS FURNISHED ONLY FOR TEST AND MAINTENANCE PURPOSES. THE CIRCUITS ARE PROPRIETARY IN NATURE AND SHOULD BE TREATED ACCORDINGLY. COPYRIGHT 1969 BY DIGITAL EQUIPMENT CORPORATION



UNLESS OTHERWISE INDICATED:
 DIODES ARE D672
 RESISTORS ARE 1/4W, 10%
 CONNECTOR IS DEC #1209340
 CONNECTOR PINS ARE DEC #1209456
 F1, F2 ARE 5 AMP

NOTE: Q1, Q2, Q4, Q5 HAVE VARIED PACKAGES
 DEPENDING ON SOURCE.

SEE DIAGRAM:



REVISIONS	CHK	CHG NO.	REV.
		00002	A
		00003	
		00004	B
		00005	SUPP.
		00006	C

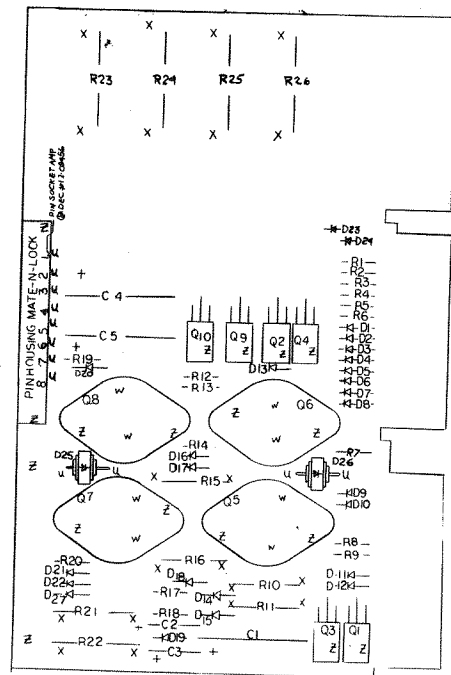
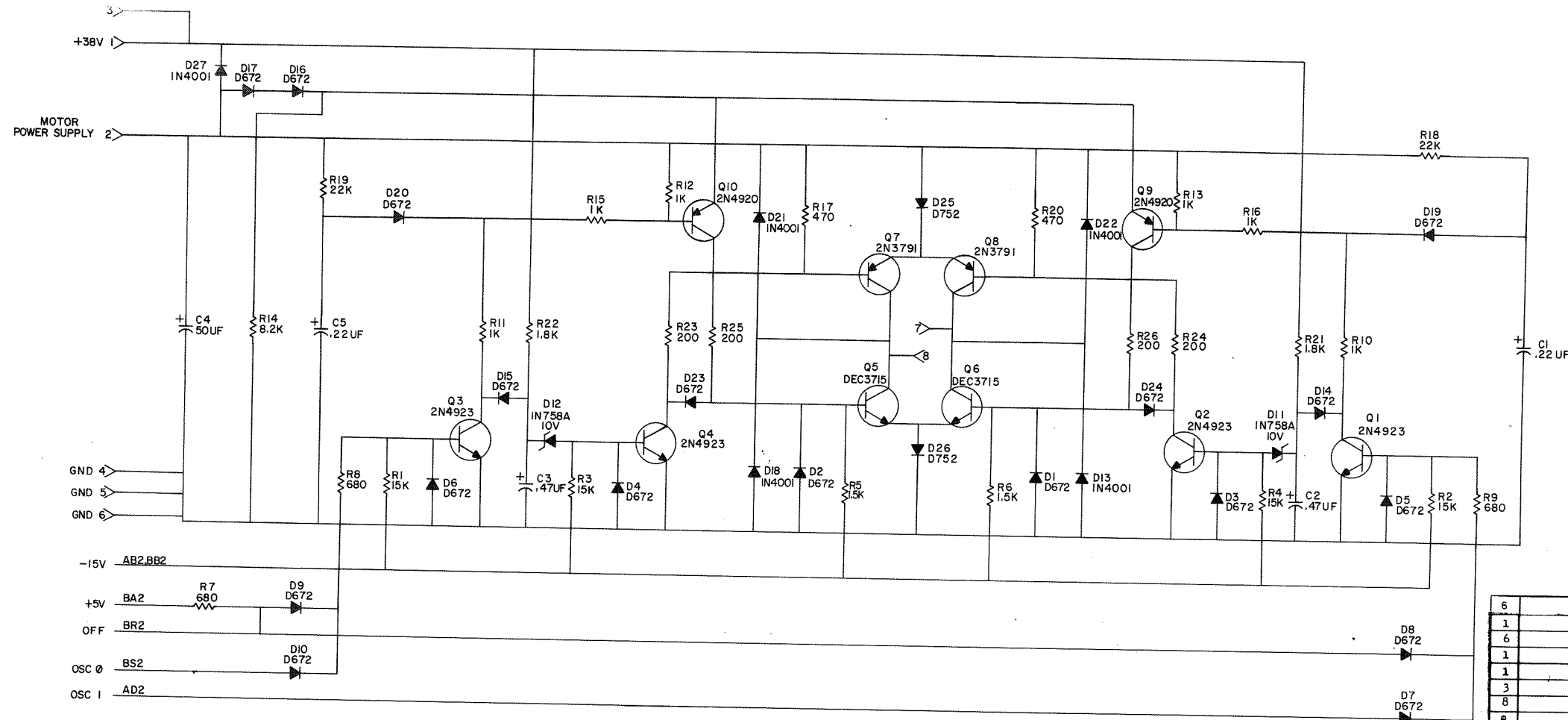
DRN. *R. Almona* DATE 9-9-69
 CHK'D. *J. J. Adette* DATE 9/9/69
 ENG. *E. L. Lathrop* DATE 2-17-70
 PROD. DATE

TRANSISTOR & DIODE CONVERSION CHART			
DEC	EIA	DEC	EIA
D672	IN3653		
MPSA05			
2N3715	NONE		
MPSA55			
IN5624	SAME		

digital
 EQUIPMENT CORPORATION
 MAYNARD, MASSACHUSETTS

TITLE DUAL MOTOR VOLTAGE CONTROL G847			
SIZE B	CODE CS	NUMBER G847-0-1	REV. D
PRINTED CIRCUIT REV. E			

THIS SCHEMATIC IS FURNISHED ONLY FOR TEST AND MAINTENANCE PURPOSES. THE CIRCUITS ARE PROPRIETARY IN NATURE AND SHOULD BE TREATED ACCORDINGLY. COPYRIGHT 1971 BY DIGITAL EQUIPMENT CORPORATION.



QTY.	REF. DESIGNATION	DESCRIPTION	DEC PART NO.	MANUFACTURER
6		NYLON SCREW 4-40X3/8	9006401-4	36
1		FIBER SPACER 1/4 x 1/4 x #6	9007615	35
6		4-40 NYLON HEX NUT	9007992	34
1		NYLON HEXNUT #4	9007992	33
1		NYLON SCREW 4-40 x 1/2	9006402-4	32
3		HANDLE EYELET	9006732	31
8		4-40 KEFNUT	9006557	30
8		4-40 x 5/16" SCREW	9006010-4	29
1		HANDLE, FLIP CHIP - GREEN	9008337-01	28
2	Q9, 10	TRANSISTOR 2N4920	1509605	27
4	Q1, 2, 4, 3	TRANSISTOR 2N4923	1509604	26
2	Q7, 8	TRANSISTOR 2N3791	1509581	25
2	Q5, 6	TRANSISTOR DEC 3715	1503068	24
2	R18, 19	RES. 22K 1/4W 5%	1301808	23
4	R23, 24, 25, 26	RES. 200 5W 5%	1309639	22
4	R1, 2, 3, 4	RES. 15K 1/4W 5%	1300496	21
1	R14	RES. 8.2K 1/4W 5%	1303179	20
2	R21, 22	RES. 1.8K 2W 10%	1300402	19
2	R5, 6	RES. 1.5K 1/4W 5%	1300391	18
4	R10, 11, 15, 16	RES. 1K 1W 5%	1300368	17
2	R12, 13	RES. 1K 1/4W 5%	1300365	16
3	R7, 8, 9	RES. 680 1/4W 5%	1301424	15
2	R17, 20	RES. 470 1/4W 5%	1300316	14
8		PIN, SOCKET	1209456	13
1		PIN HOUSING	1209340	12
2	D11, 12	DIODE ZENER 1N758A 10V, 1/4W 5%	1100125	11
2	D25, 26	DIODE D752	1110615	10
18	D1-10, 14-17, 19, 20, 23, 24	DIODE D672	1105275	9
5	D13, 18, 21, 22, 27	DIODE 1N4001	1102942	8
2	C1, 5	CAP. 0.22UF 100V 10% MYLAR	1000037	7
2	C2, 3	CAP. 0.47UF 35V 10% S.TANT	1005965	6
1	C4	CAP. 50UF 50V -10+75% S.TANT	1000080	5
1		ETCHED CIRCUIT BOARD	5008522	4
		MODULE ECO HISTORY	B-MH-G848-0-6	3
		ETCH REAR, MOTOR CCNT	EIA-5008522-0-0	2
		X-Y COORDINATE HOLE LOCATION	K-CO-G848-0-4	1
		DESCRIPTION	DEC PART NO.	MANUFACTURER

REV	DATE	BY	CHKD	DATE	DESCRIPTION
1	2-2-69	A. RITCEY			TRANSISTOR & DIODE CONVERSION CHART
2	2-4-69	R. TREMBLAY			
3	4-3-70	E. LUTTIG			

REV	DATE	BY	CHKD	DATE	DESCRIPTION
1	2-2-69	A. RITCEY			DEC
2	2-4-69	R. TREMBLAY			EIA
3	4-3-70	E. LUTTIG			DEC

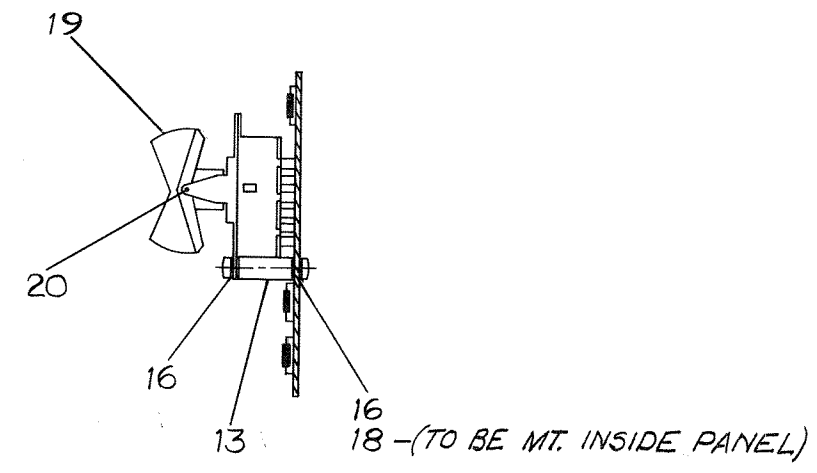
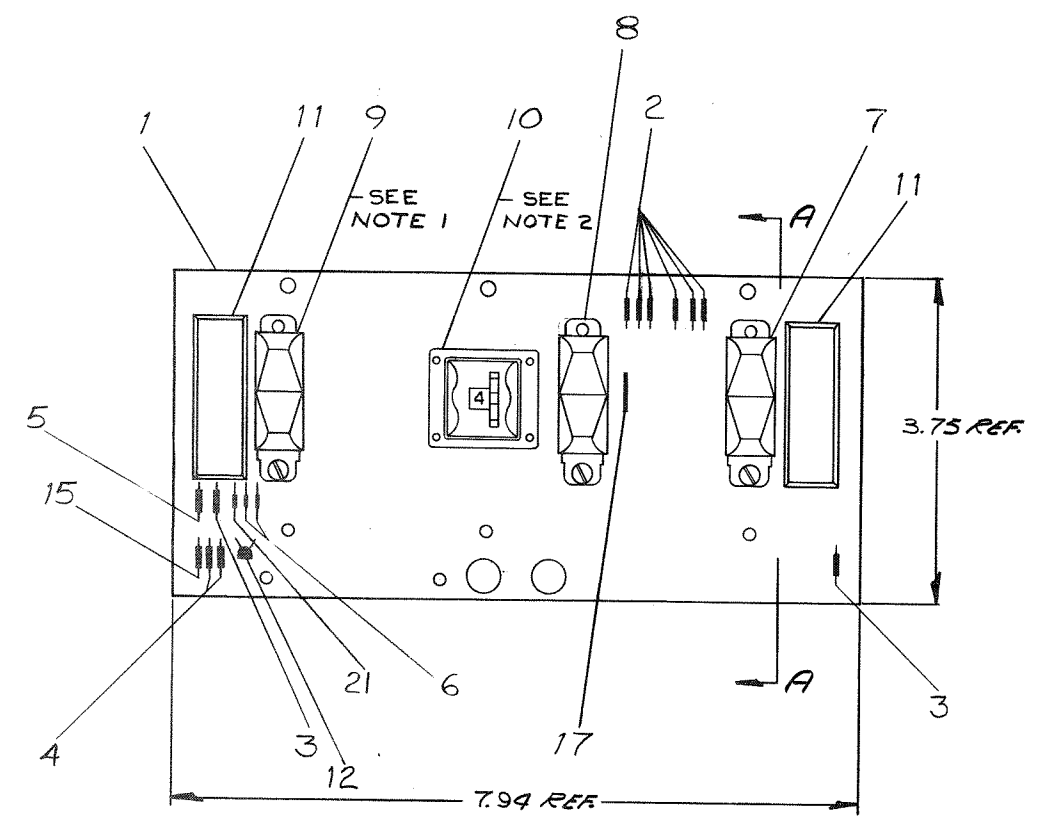
REV	DATE	BY	CHKD	DATE	DESCRIPTION
1	2-2-69	A. RITCEY			D672
2	2-4-69	R. TREMBLAY			IN3853
3	4-3-70	E. LUTTIG			D725
4	2-2-69	A. RITCEY			IN758A, 10V
5	2-2-69	A. RITCEY			IN4001
6	2-2-69	A. RITCEY			SAME

digital MOTOR CONTROL
 EQUIPMENT CORPORATION
 SIZE CODE NUMBER
 D CS 8848-0-1
 PRINTED CIRCUIT REV M

This drawing and specifications, herein, are the property of Digital Equipment Corporation and shall not be reproduced or copied or used in whole or in part as the basis for the manufacture or sale of items without written permission.

0-0-00580495 2

- NOTES:
1. HAND DEGREASE ONLY-DO NOT VAPOR DEGREASE AS IT WILL CAUSE MALFUNCTION IN SWITCHES
 2. IN SOLDERING OPERATIONS DO NOT ALLOW FLUX OR CLEANING AGENT TO ENTER SWITCH



SECTION A-A

REV.	CHG. NO.	DATE	BY
B	00020	4-3-70	LUTTIG
C	00021	4-3-70	LUTTIG
D	00003	3/24/73	H. DRAB

FIRST USED ON OPTION / MODEL
TU56

TOLERANCES
DECIMALS
.XXX = ±.005
.XX = ±.02
.X = ±.1

DO NOT SCALE DRAWING
UNLESS OTHERWISE SPECIFIED
DIMENSION IN INCHES

TOLERANCES
DECIMALS FRACTIONS ANGLES
±.008 ±.004 ±.04 ±.030°
FINAL SURFACE QUALITY
REMOVE BURRS AND BREAK SHARP CORNERS

MATERIAL
FINISH

QTY.	DESCRIPTION	PART NO.	ITEM NO.
	PARTS LIST		
	DRN	DATE	DATE
	CHK'D	DATE	DATE
	ENG.	DATE	DATE
	PROJ. ENG.	DATE	DATE
	PROD.	DATE	DATE
	NEXT HIGHER ASSY		
	D-7A-700622-0-0		
	SCALE	SHEET 1 OF	
	TITLE		
	digital EQUIPMENT CORPORATION MAYNARD, MASSACHUSETTS		
	SWITCH CONTROL PANEL (TU56)		
	SIZE CODE	NUMBER	REV.
	DAD	5408500-0-0	D

SIZE CODE NUMBER
DAD 5408500-0-0

REV. D

**DIGITAL EQUIPMENT CORPORATION
MAYNARD, MASSACHUSETTS
PARTS LIST**

MADE BY *W. J. ...* CHECKED *D. Wallace* SECTION
 DATE *3-18-70* DATE *1-30-70* PROD *P. Johnson* ISSUED SECT.
 ENG *E. Sullivan* DATE *3-18-70*

ITEM NO.	CL	DWG NO./PART NO. BASIC	PART NO. VAR.	DESCRIPTION	QTY/VAR	UNIT COST	UNIT QUANTITY	UNIT QUANTITY ISSUED
REF		C-GS-5408500-0-1		CIRCUIT SCHEMATIC				
REF		K-CO-5408500-0-4		X-Y COORDINATE HOLE LOCATION				
REF		D-AH-5408500-0-5		ASSY/DRILLING HOLE# LAYOUT				
1		5008499		ETCHED CKT. BD. TU56			1	
2		1300386		RES. 1.2K, 1/4W, 10% C.C.			6	
3		1301421		RES. 15, 1/4W, 10%			2	
4		1300490		RES. 12K, 1/4W, 10%			2	
5		1302388		RES. 2K, 1/4W, 5%			1	
6		1100114		DIODE D664			2	
7		1209614		SWITCH 3 POS. RS-38-FB PC			1	
8		1209613		SWITCH 3 POS. RS-39-FB PC			1	
9		1209612		SWITCH MINI RS-33-FB PC			1	
10		1209617		SWITCH 8 POS THUMBWHEEL SWITCH			1	
11		1209637		LIGHT			2	
12		1509338		TRANSISTOR, MPS 6531			1	
13		9008833		SPACER, 3/16 AF x 5/8 LG #4-40 AL			3	
14		9996929		SCREW, 6-32 x 1/4			6	
15		1300432		RES. 3K, 1/4W, 5%			1	
16		9006009-4		SCR SLOTTED HD #4-40 x 1/4 LG SST			6	
17		9107560-01		#22 AWG BUS WIRE			1	

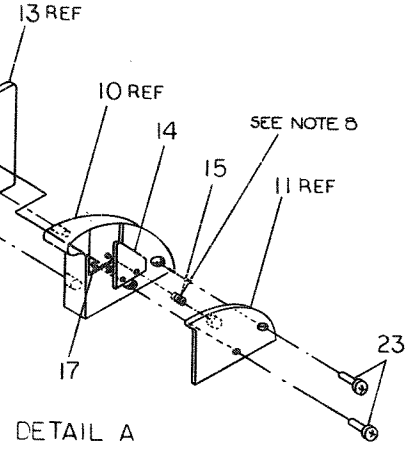
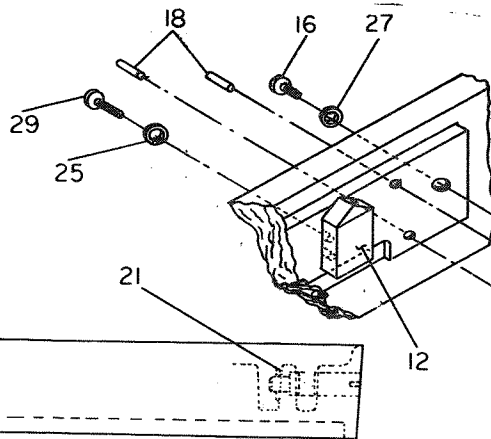
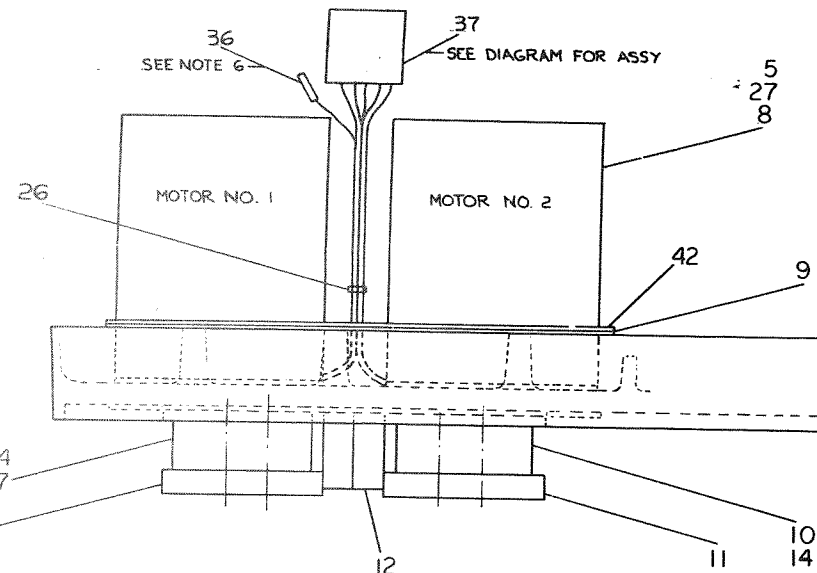
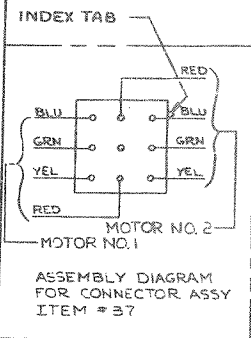
TITLE: TU56 CONTROL BOARD
 ASSY NO. D-AD-5408500-0-0
 SHEET 1 OF 2
 SIZE CODE A PL
 NUMBER 5408500-0-0
 REV. ECO NO. D 00003

**DIGITAL EQUIPMENT CORPORATION
MAYNARD, MASSACHUSETTS
PARTS LIST**

MADE BY *W. J. ...* CHECKED *D. Wallace* SECTION
 DATE *Oct. 28, 1969* DATE *1-30-70* PROD *P. Johnson* ISSUED SECT.
 ENG *E. Sullivan* DATE *3-18-70*

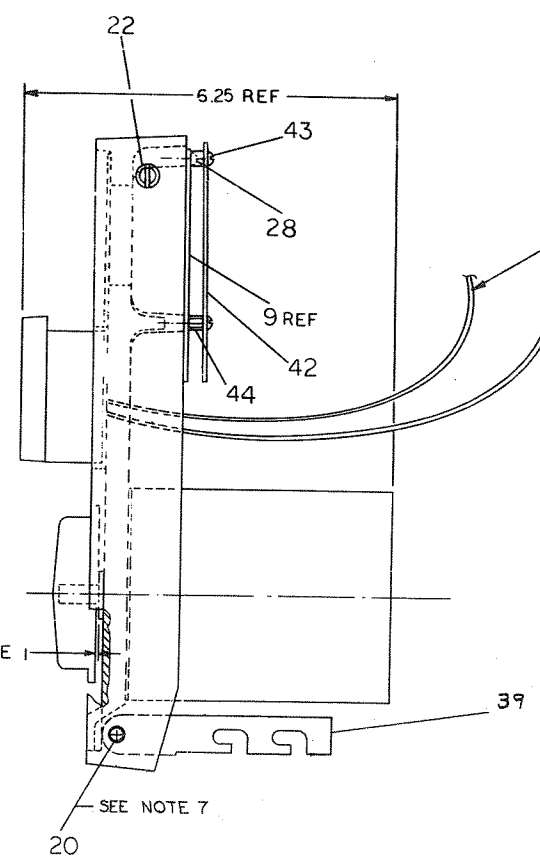
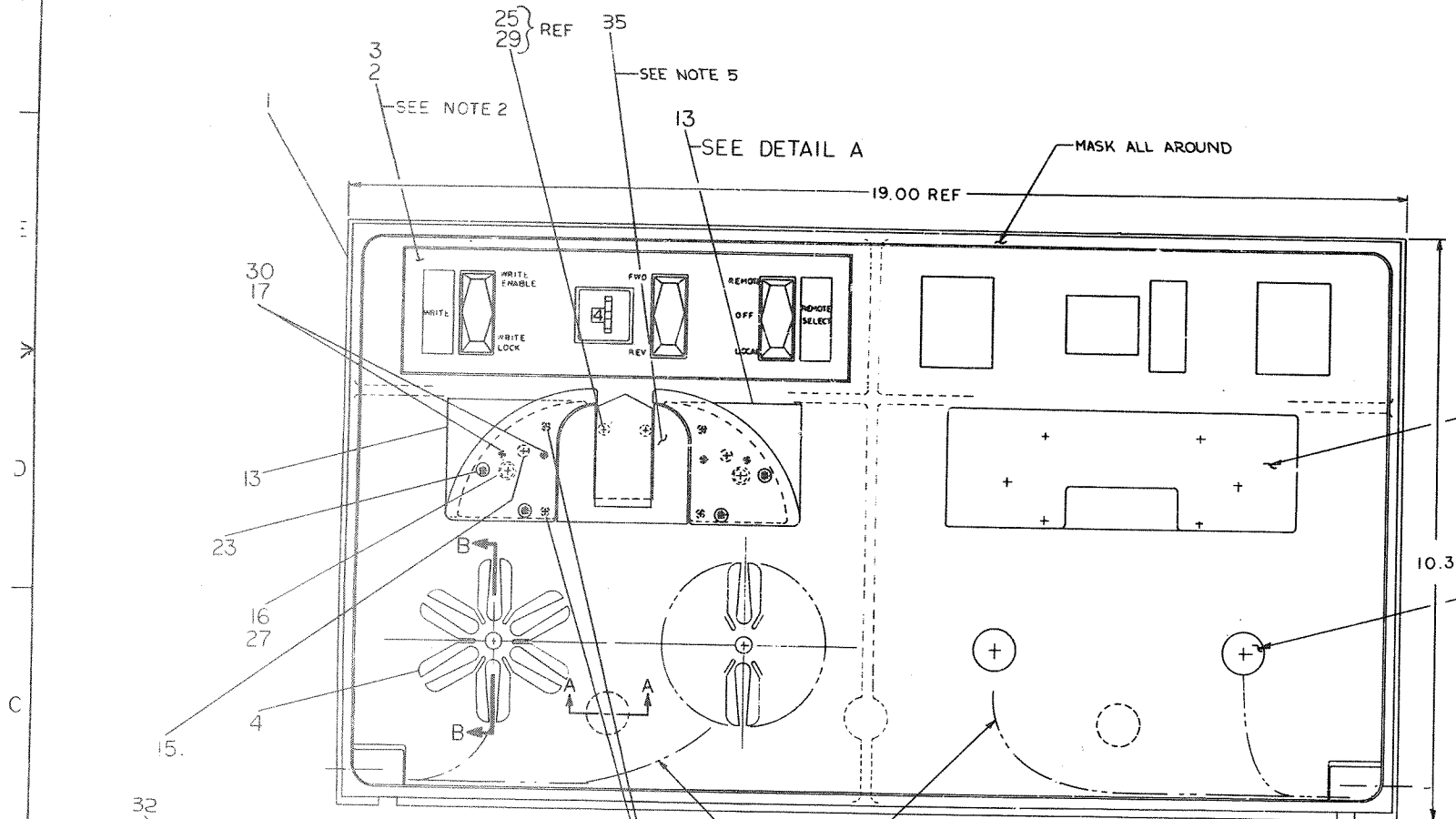
ITEM NO.	CL	DWG NO./PART NO. BASIC	PART NO. VAR.	DESCRIPTION	QTY/VAR	UNIT COST	UNIT QUANTITY	UNIT QUANTITY ISSUED
18		9006632		WASHER INT TOOTH #4			3	
19		1209711-01		BUTTON, ROCKER			3	
20		9008842		DOWEL PIN			3	
21		1100121		DIODE INT748 3.9V 10% 40mw			1	

ASSY NO. D-AD-5408500-0-0
 SHEET 2 OF 2
 SIZE CODE A PL
 NUMBER 5408500-0-0
 REV. ECO NO. D 00003

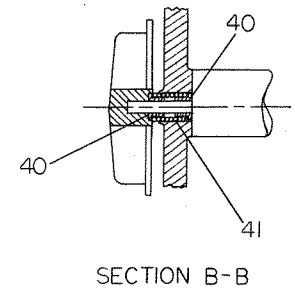
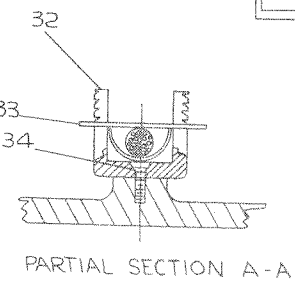


NUMBER	VARIATION
7006320-1	UNIT AS SHOWN
7006320-2	DOUBLE UNIT

- NOTES**
1. POSITION OF ITEM NO. 4 (HUB) MUST BE .017" OUT FROM BOSS ON CASTING. MEASURE WITH GAUGE PART NO. 38.
 2. ASSEMBLE ITEM NO. 2 (OVERLAY) USING ITEM NO. 3 (ADHESIVE).
 3. COAT BOTH SURFACES (REAR SURFACE OF OVERLAY & FRONT SURFACE OF PANEL MTG) & ALLOW A MIN. OF ONE (1) MINUTE DRY TIME BEFORE ASSY. MASK SURFACES AS INDICATED BEFORE APPLYING ADHESIVE TO MTG. PANEL.
 4. ~~BOWEL PINS MUST BE INSERTED WITH TAPERED END FIRST.~~
 5. ASSEMBLE ITEM 35 TO FRONT PANEL USING ITEM 2 (APPLY TO REAR SURFACE OF ITEM 35 ONLY).
 6. CRIMP ITEM 36 TO MOTOR LEADS AS SHOWN. INSERT PINS INTO ITEM 37 (PINS MUST ENTER SIDE WITH SQUARE HOLES ONLY).
 7. DO NOT ASSEMBLE ITEM 20 TO FRONT PANEL UNTIL ITEM 39 IS INTO PLACE SO THAT ITEM 20 WILL GO THRU ITEM 39 AT ASSEMBLY.
 8. APPLY CONTACT CEMENT TO BOTTOM TURN OF ITEM 15 BEFORE INSERTING ITEM 15 INTO ITEM 11.



INDICATES CABLE WIRE FROM ITEM NO. 12 (HEAD)



CAUTION
CHANGE COULD AFFECT U.L. LISTING

TOLERANCES	DECIMALS
.XXX	± .005
.XX	± .02
.X	± .1

REV	DATE	BY	CHKD	APP'D	DESCRIPTION
1	10/24/70	WILLIAMS			REVISED TO ADD PART 39
2	11/10/70	WILLIAMS			REVISED TO ADD PART 39
3	11/10/70	WILLIAMS			REVISED TO ADD PART 39
4	11/10/70	WILLIAMS			REVISED TO ADD PART 39
5	11/10/70	WILLIAMS			REVISED TO ADD PART 39
6	11/10/70	WILLIAMS			REVISED TO ADD PART 39
7	11/10/70	WILLIAMS			REVISED TO ADD PART 39
8	11/10/70	WILLIAMS			REVISED TO ADD PART 39
9	11/10/70	WILLIAMS			REVISED TO ADD PART 39
10	11/10/70	WILLIAMS			REVISED TO ADD PART 39
11	11/10/70	WILLIAMS			REVISED TO ADD PART 39
12	11/10/70	WILLIAMS			REVISED TO ADD PART 39
13	11/10/70	WILLIAMS			REVISED TO ADD PART 39
14	11/10/70	WILLIAMS			REVISED TO ADD PART 39
15	11/10/70	WILLIAMS			REVISED TO ADD PART 39
16	11/10/70	WILLIAMS			REVISED TO ADD PART 39
17	11/10/70	WILLIAMS			REVISED TO ADD PART 39
18	11/10/70	WILLIAMS			REVISED TO ADD PART 39
19	11/10/70	WILLIAMS			REVISED TO ADD PART 39
20	11/10/70	WILLIAMS			REVISED TO ADD PART 39
21	11/10/70	WILLIAMS			REVISED TO ADD PART 39
22	11/10/70	WILLIAMS			REVISED TO ADD PART 39
23	11/10/70	WILLIAMS			REVISED TO ADD PART 39
24	11/10/70	WILLIAMS			REVISED TO ADD PART 39
25	11/10/70	WILLIAMS			REVISED TO ADD PART 39
26	11/10/70	WILLIAMS			REVISED TO ADD PART 39
27	11/10/70	WILLIAMS			REVISED TO ADD PART 39
28	11/10/70	WILLIAMS			REVISED TO ADD PART 39
29	11/10/70	WILLIAMS			REVISED TO ADD PART 39
30	11/10/70	WILLIAMS			REVISED TO ADD PART 39
31	11/10/70	WILLIAMS			REVISED TO ADD PART 39
32	11/10/70	WILLIAMS			REVISED TO ADD PART 39
33	11/10/70	WILLIAMS			REVISED TO ADD PART 39
34	11/10/70	WILLIAMS			REVISED TO ADD PART 39
35	11/10/70	WILLIAMS			REVISED TO ADD PART 39
36	11/10/70	WILLIAMS			REVISED TO ADD PART 39
37	11/10/70	WILLIAMS			REVISED TO ADD PART 39
38	11/10/70	WILLIAMS			REVISED TO ADD PART 39
39	11/10/70	WILLIAMS			REVISED TO ADD PART 39
40	11/10/70	WILLIAMS			REVISED TO ADD PART 39
41	11/10/70	WILLIAMS			REVISED TO ADD PART 39

FIRST USED ON OPTION/MODEL	QTY.	DESCRIPTION	PART NO.	ITEM NO.
TU56				
UNLESS OTHERWISE SPECIFIED DIMENSIONS IN INCHES				
TOLERANCES DECIMALS				
.XXX = ± .005				
.XX = ± .02				
.X = ± .1				
MATERIAL				
NEXT HIGHER ASSY				
SCALE				
EJAD7006320-0-0				
TITLE				
PANEL FRONT ASSEMBLY				
EQUIPMENT CORPORATION				

DIGITAL EQUIPMENT CORPORATION
MAYNARD, MASSACHUSETTS

PARTS LIST

MADE BY KEN GULICK
DATE 6/5/69
ENG *Cellulose*
DATE 8-26-69
CHECKED D. HEALY
DATE 7/23/69
PROD C K *Rayphorus*
DATE 8/26/69
SECTION 1
ISSUED SECT. 1

ITEM NO.	DWG NO. / PART NO.	DESCRIPTION	QUANTITY / VARIATION
1	E-MD-7407395-0-0	PANEL MTG (TU56)	1
2	D-1A-7410968-0-0	PANEL OVERLAY	1
3		ADHESIVE SCOTCH GRIP SPRAY #77	A/RA/R
4	C-1A-7407390-0-0	HUB ASSY (6 PT CONTACT)	2 4
5	9006341-08	SCR SOC HD CAP 10 24 X 1/2 BLK PASS.	8 16
6	C-MD-7407282-2-0	COVER PLATE (L.H.)	1 2
7	C-1A-7407283-2-0	TAPE GUIDE (L.H.)	1 2
8	1209602	MOTOR, TORQUE	2 4
9	D-1A-7006222-0-0	SWITCH CONTROL PANEL ASSY	1 2
10	C-1A-7407283-1-0	TAPE GUIDE (R.H.)	1 2
11	C-MD-7407282-1-0	COVER PLATE (R.H.)	1 2
12	1209691	HEAD ASSY	1 2
13	C-MD-7405136-0-0	REAR CHECK TAPE GUIDE	2 4
14	B-MD-7405114-0-0	WEAR PLATE	2 4
15	1211821	SPR #711-22-X INST SPEC. CO.	2 4
16	9006345-08	SCR SOC HD CAP #10-32 X 3/8 SST	2 4
17	9008132	DOWEL PIN 3/32 DIA X 7/16 LG	4 8
18	9008131	POWER PIN 1/8 DIA X 1/8 LG	4 8
19	B-MD-7405114-2-0	WEAR PLATE (S.H.)	1 2
20	9008130	DOWEL PIN 1/4 DIA X 1 1/4	2 2
21	90-07785	GRIP, EXT SER #5555-37 WALDES 3/8" SHAFT	2 2
22	B-MD-7407400-0-0	PIN, LOCK	2 2

TITLE PANEL FRONT, ASSEMBLY
ASSY NO. E-AD-7006320-0-0
SIZE CODE A PL
NUMBER 7006320-0-0
REV. P
ECO NO. TU56-00084
SHEET 1 OF 2
DIST. C

DIGITAL EQUIPMENT CORPORATION
MAYNARD, MASSACHUSETTS

PARTS LIST

MADE BY KEN GULICK
DATE 6/5/69
ENG *Cellulose*
DATE 8-26-69
CHECKED D. HEALY
DATE 7/25/69
PROD C K *Rayphorus*
DATE 8/26/69
SECTION 1
ISSUED SECT. 1

ITEM NO.	DWG NO. / PART NO.	DESCRIPTION	QUANTITY / VARIATION
23	9006331-08	SCR SOC HD CAP 6-32 X 5/8 LG BLK PASS.	4 8
24	C-MD-7405136-1-0	REAR CHECK TAPE GUIDE (S.H.)	1 2
25	90066632	WASH INT TOOTH #4	2 4
26	9007032	TIE WRAP #SST-2-B PANDUIT	A/RA/R
27	9007651	WASH EXT TOOTH #10 HOLE	10 20
28	9006022-1	SCR, PH HD PAN #6-32 X 3/8 SST	4 8
29	9006014-1	SCR PH HD PAN #4-40 X 5/8 LG SST	2 4
30	9008136	GRIP KING EXT SERIES C-5555-95	4 8
31	9006311	HEX SOC SET SCR #10-32 X 1/4 SST	4 8
32	90-07772-9	CLAMP, CABLE BASE	1 2
33	90-07772-10	CLAMP, CABLE FOR	1 2
34	90-06037-2	SCREW FLAT HEAD #8-32 x 3/8 Lg SST	1 2
35	C-1A-7408008-0-0	FILLER PLATE	1 2
36	1209378	PIN, CONNECTOR	8 16
37	1209351-09	HOUSING, CONNECTOR	1 2
38	C-1A-7408010-0-0	GAUGE, HUB	A/RA/R
39	C-MD-1209830	ARM, PANEL SUPPORT	2 2
40	1209926	BUSHING, OIL IMPREGNATED BRONZE	4 8
41	1209917	SPRING, COMPRESSION	2 4
42	C-MD-7408287-0-0	GUARD PLATE	1 2
43	90-06024-1	SCR, PH HD PAN #6-32 x 1/2 SST	2 4
44	90-06793	SPACER 3/16AF X 3/16LG #6 HOLE AL	2 4

TITLE PANEL FRONT ASSEMBLY
ASSY NO. E-AD-7006320-0-0
SIZE CODE A PL
NUMBER 7006320-0-0
REV. P
ECO NO. TU56-00084
SHEET 2 OF 2
DIST. C